

# SPARE PART CATALOGUE FOR HOIST CXT60110050P64EEFMS

English/ 78456005-0.ORD/ 12.5.2010

HKY77837/10-3199 / 131.RE350/FLS/IMP/B/11921

/10-3199 / 025.000



Read the instructions supplied with the product before installation and commissioning.



Keep the instructions in a safe place for future reference.

Table of content

1 General ..... 3

1.1 Symbols and abbreviations ..... 3

1.2 Spare part order ..... 3

2 Frame ..... 4

3 Rope drum ..... 5

4 Gear ..... 6

5 Hoisting limit switch ..... 7

6 Motor ..... 8

# 1 GENERAL

## 1.1 Symbols and abbreviations

The following symbols are used in the instructions:



**Warning!**



**Caution**

## 1.2 Spare part order



When ordering spare parts please specify:

- spare part number
- description
- product serial number
- complete product type
- date of manufacture



If spare part position is referred on drawing but not on list below contact your spare part supplier.

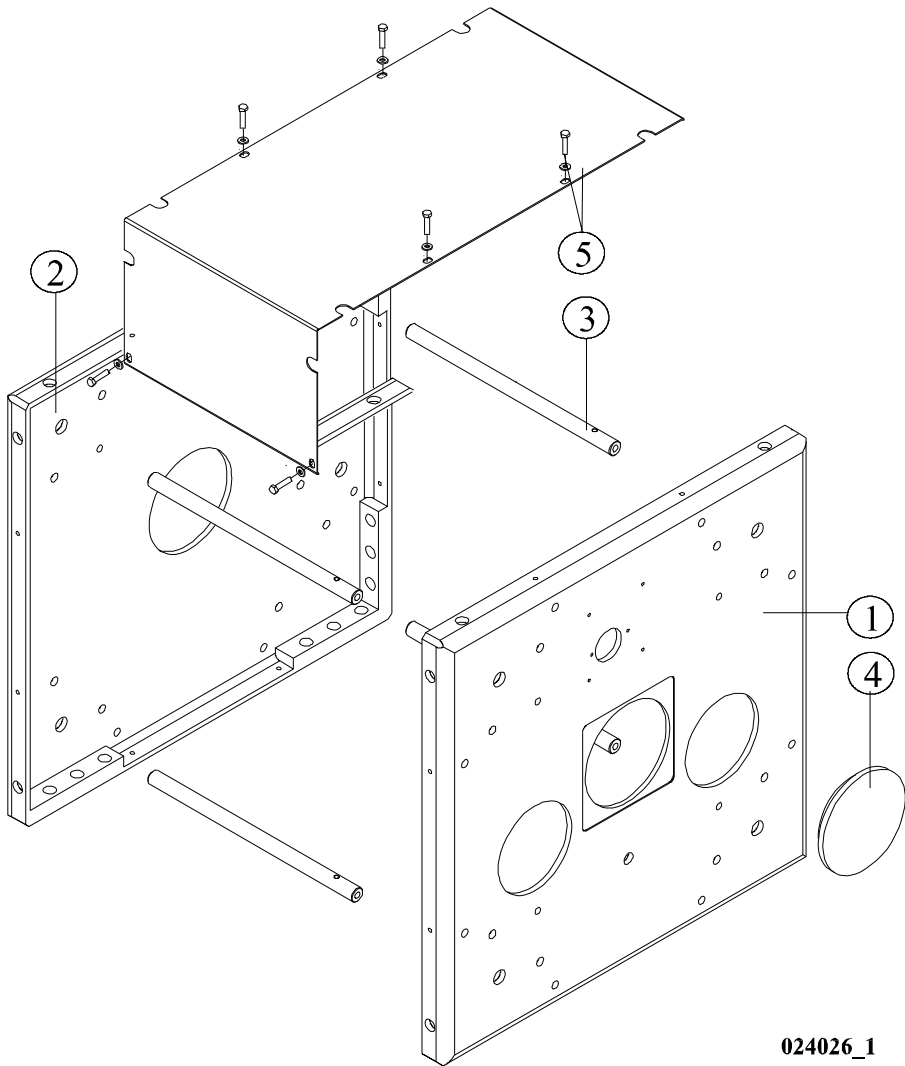


**Always use manufacturer's original spare parts**



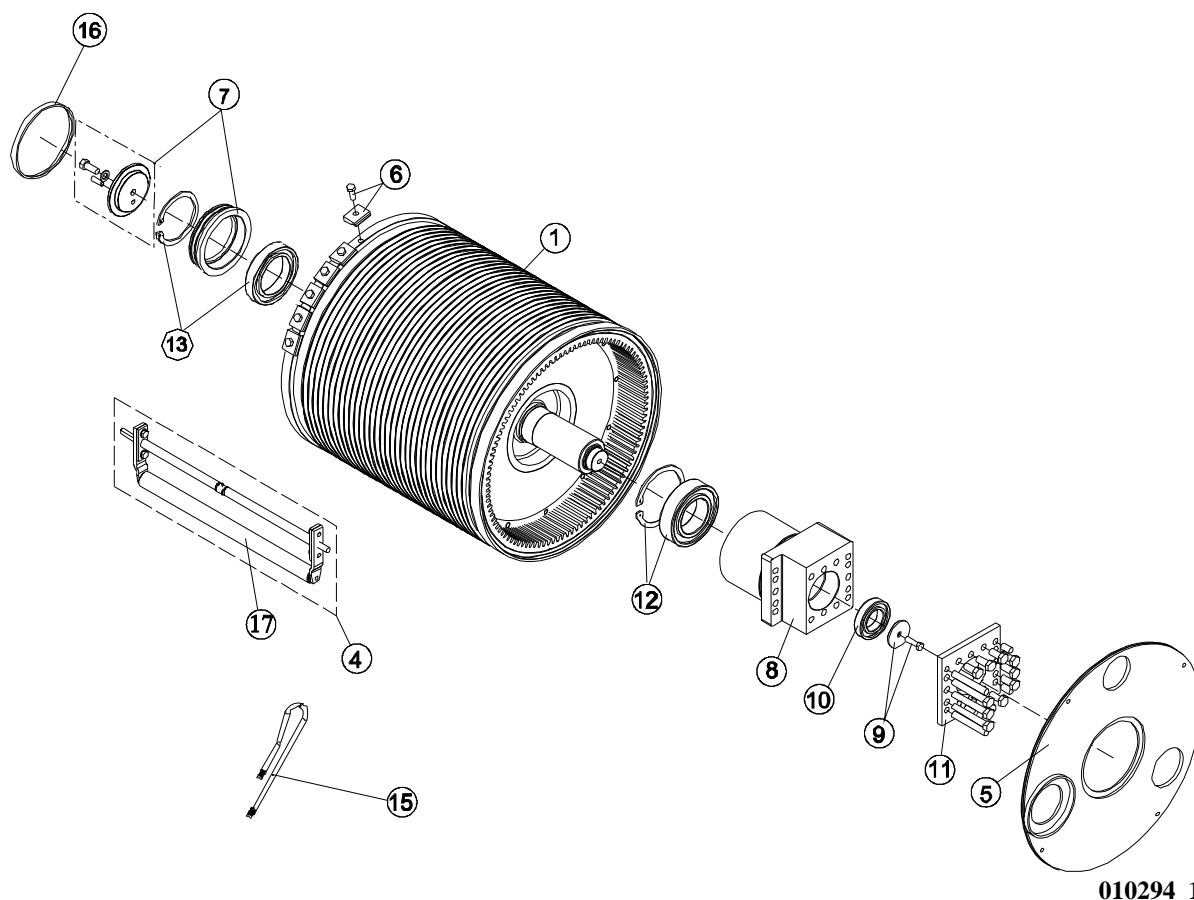
**Includes standard model spare parts only! If the hoist is special, use the special drawings to specify spare parts for special assemblies.**

2 FRAME



POS.	ITEM	FROM	TO	DESCRIPTION	PCS
1	52304565			END PLATE	1
2	52319828	HFY29965		END PLATE	
3	52300498			SHAFT	4
4	52307534			COVER	1
5	52312755			COVER SET	1

### 3 ROPE DRUM



POS.	ITEM	FROM	TO	DESCRIPTION	PCS
1	52321983	HFY29965		ROPE DRUM	1
4	52312798			ROLLER; PRESSURE ROLLER	1
5	52332571			SEALING SET	1
6	52312819			ROPE CLAMP	6
7	52321925	HFY29965		BEARING HOUSING	1
8	52328352			BEARING HOUSING	1
9	52300562			JOINT PLATE	1
10	60026328			BEARING; DEEP GROOVE BALL BEARING	1
11	52312918	H0314936		JOINT PLATE	1
12	52313124			BEARING SET	1
13	52321926	HFY29965		BEARING SET	1
15	52296473			ROPE	1
16	52319773		HFY29965	COVER	1
17	52305592			ROLLER; PRESSURE ROLLER	1

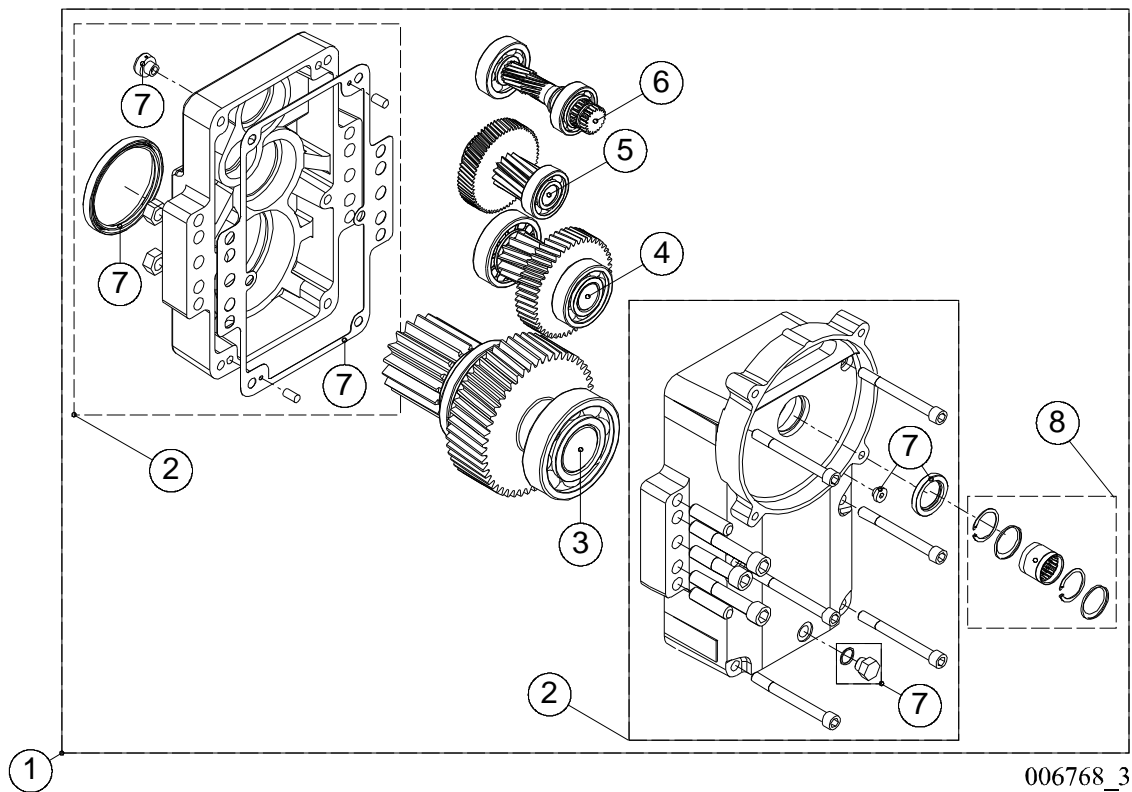


When ordering wire ropes please specify rope length. Original rope length is documented on Wire Rope Certificate.



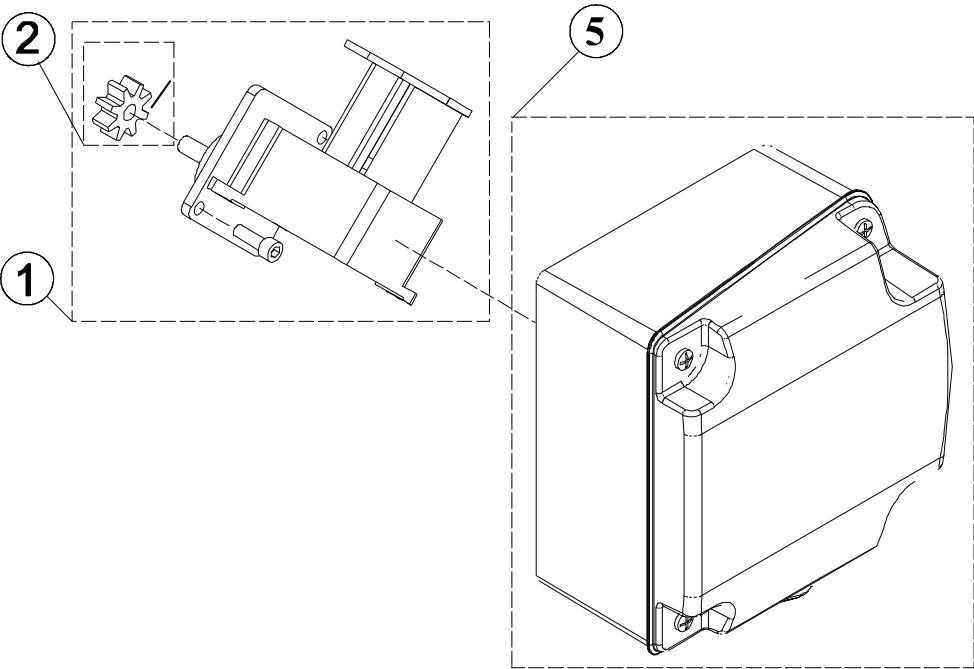
In two-rope systems (True Vertical Lift), replace both ropes simultaneously. Ensure that both ropes are exactly identical except right/left hand lay.

4 GEAR



POS.	ITEM	FROM	TO	DESCRIPTION	PCS
1	52320094			GEAR	1
2	52320685			GEAR HOUSING	1
3	52320692			SHAFT ASSEMBLY	1
4	52320701			SHAFT ASSEMBLY	1
5	52320704			SHAFT ASSEMBLY	1
6	52320709			SHAFT ASSEMBLY	1
7	52320129			SEALING SET	1
8	52321002			COUPLING	1

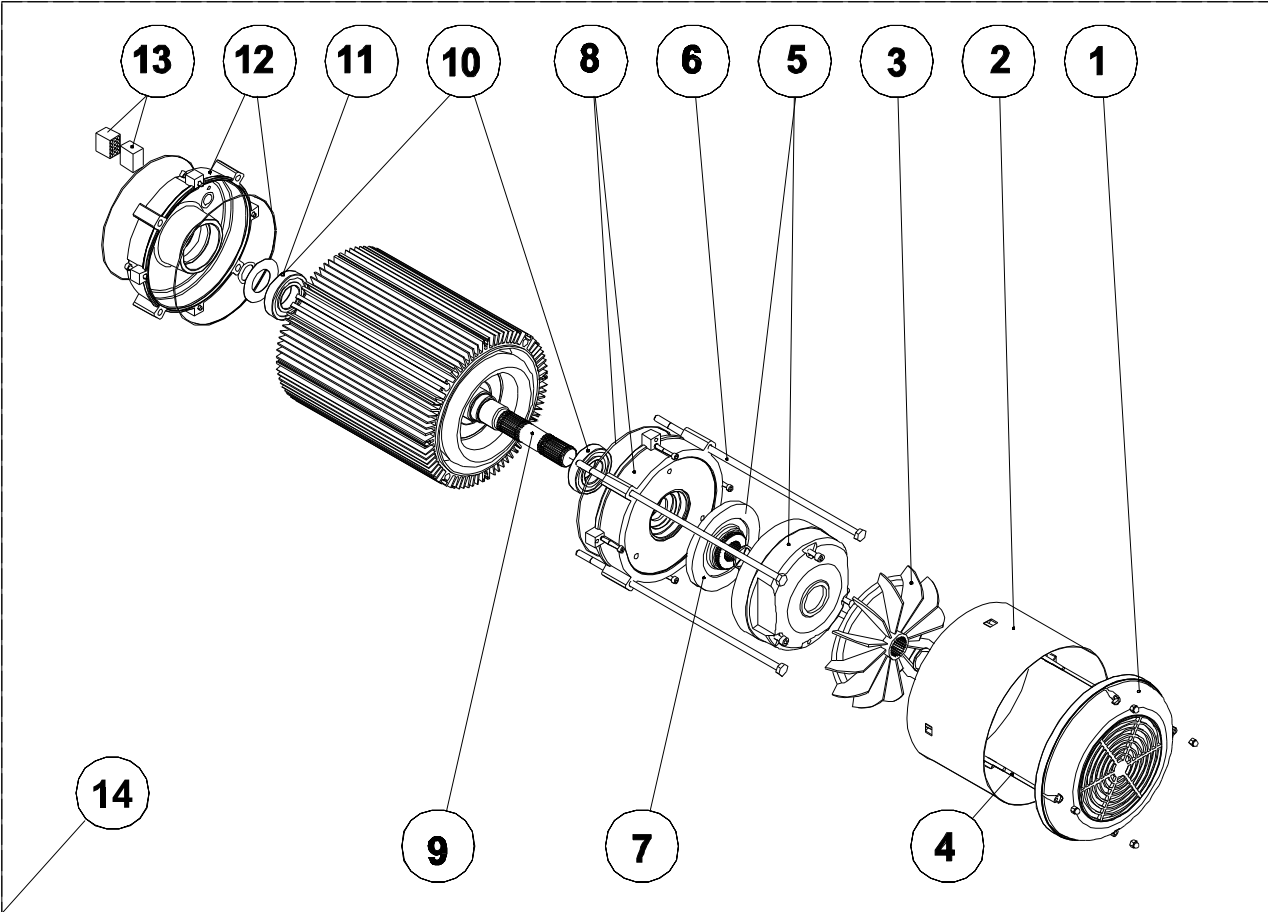
5 HOISTING LIMIT SWITCH



003103\_2

POS.	ITEM	FROM	TO	DESCRIPTION	PCS
1	52299720			LIMIT SWITCH	1
2	52300926			GEAR WHEEL SET	1
5	52312349			JUNCTION BOX	1

6 MOTOR



003134\_1



When ordering motors please specify motor serial number

POS.	ITEM	FROM	TO	DESCRIPTION	PCS
1	52292757			GRATING	1
2	52292755			COVER	1
3	52292744			FAN	1
4	52292768			SUPPORT	1
5	52318372			BRAKE	1
6	52293911			SCREW SET	1
7	52314610			BRAKE DISC SET	1
8	52292763			FLANGE	1
9	52292751			SHAFT ASSEMBLY	1
10	52292747			BEARING SET	1
11	-			NOT VALID FOR THIS PRODUCT!	
12	52292762			FLANGE	1
13	52292622			PLUG	1
14	->			SPECIFY DEVICE SERIAL NUMBER WHEN ORDERING!	