

SPARE PART CATALOGUE FOR HOIST CXT40210020P36FBN0F

English/ 781687-0.ORD/ 12.5.2010

HKY76456/OL0093/O24144-42/OL0093





Read the instructions supplied with the product before installation and commissioning.



Keep the instructions in a safe place for future reference.

Table of content

1	General	3
1.1	Symbols and abbreviations.....	3
1.2	Spare part order.....	3
2	Frame.....	4
3	Rope drum.....	5
4	Gear.....	7
5	Overload device.....	8
6	Hook.....	9
7	Hoisting limit switch.....	10
8	Trolley.....	11
9	Trolley, side plate	12
10	Trolley, side plate.....	13
11	Travelling machinery	14
12	Electric panel.....	15
13	Motor	16

1 GENERAL

1.1 Symbols and abbreviations

The following symbols are used in the instructions:



Warning!



Caution

1.2 Spare part order



When ordering spare parts please specify:

- spare part number
- description
- product serial number
- complete product type
- date of manufacture



If spare part position is referred on drawing but not on list below contact your spare part supplier.

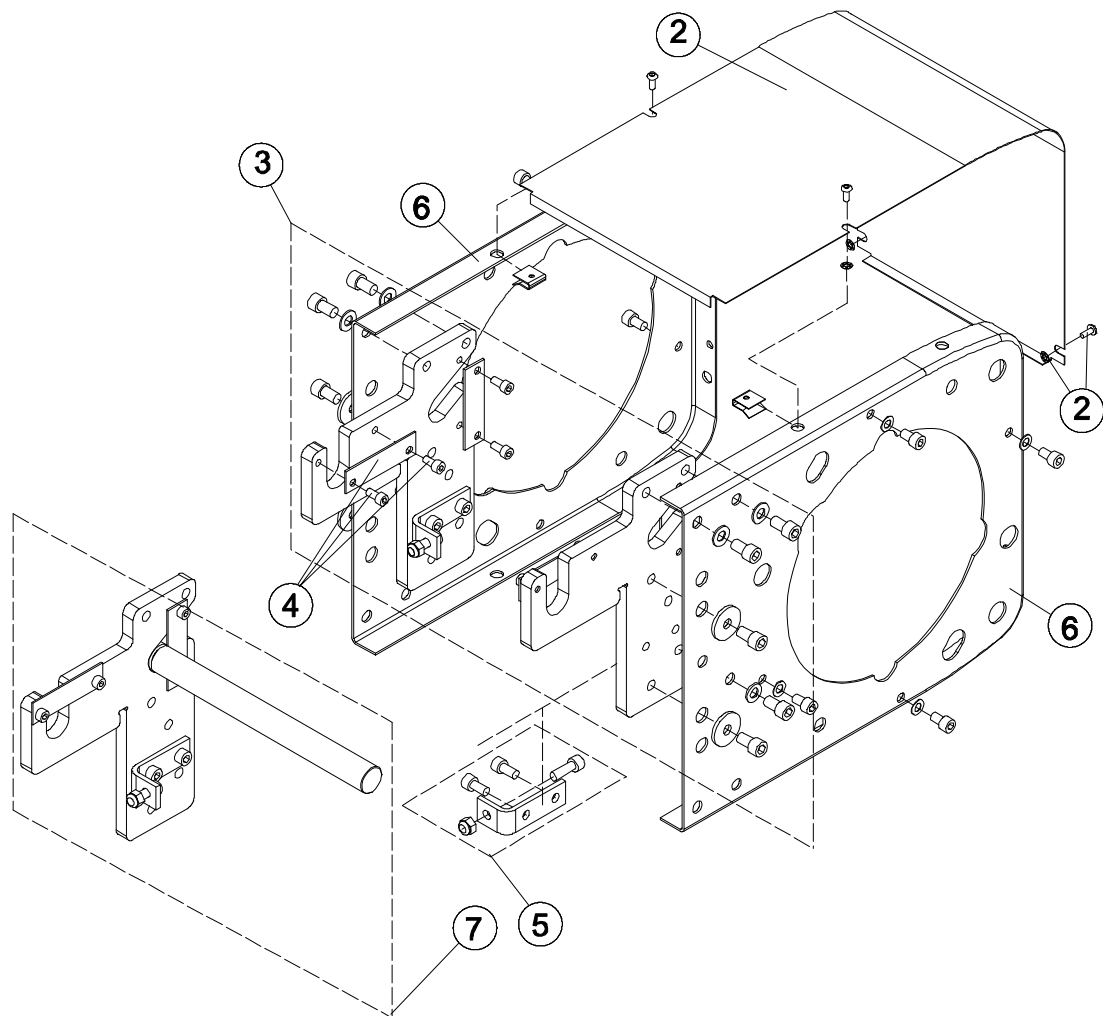


Always use manufacturer's original spare parts



Includes standard model spare parts only! If the hoist is special, use the special drawings to specify spare parts for special assemblies.

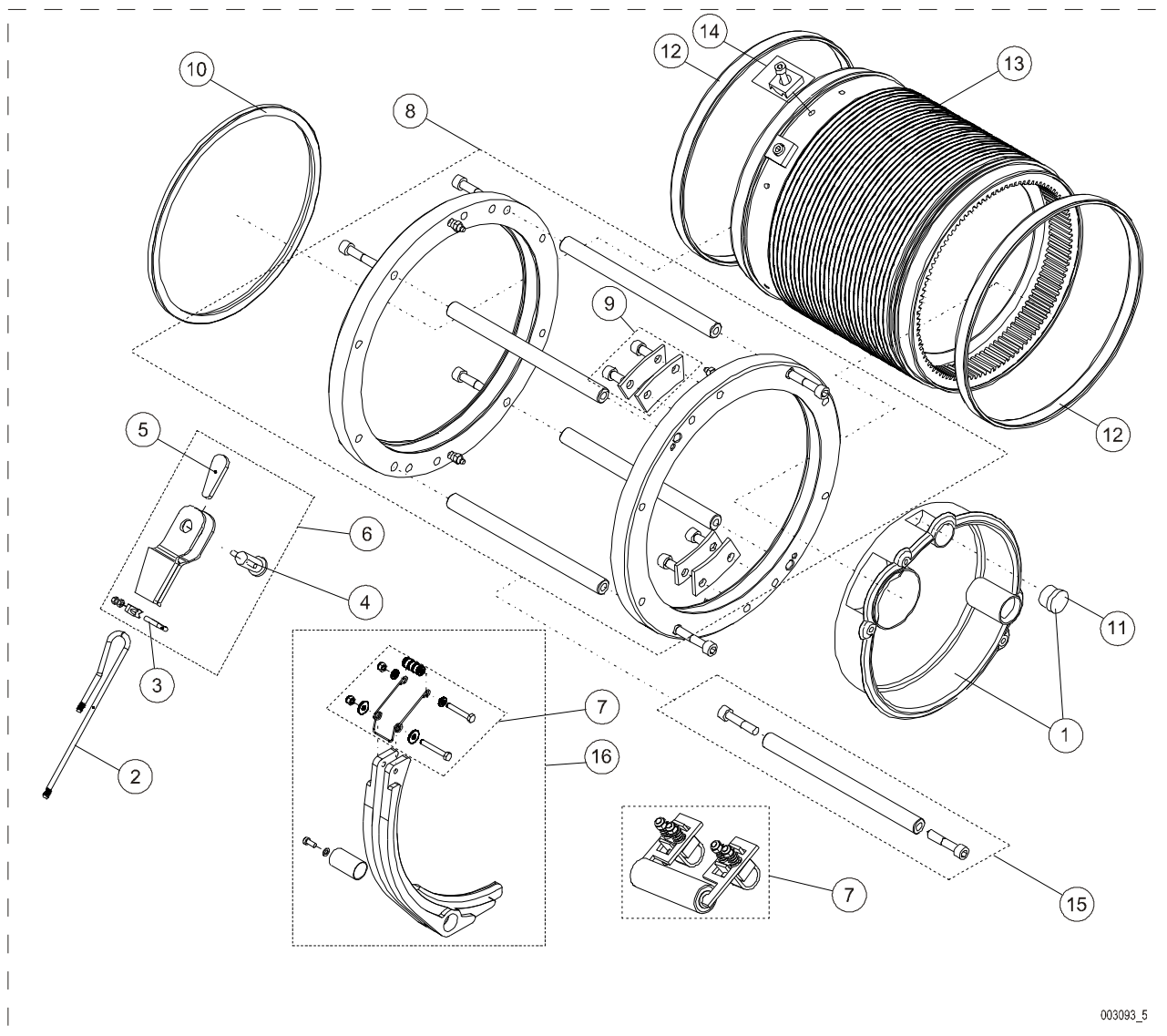
2 FRAME



003124_3

POS.	ITEM	FROM	TO	DESCRIPTION	PCS
2	52326535			COVER SET	1
3	52293634			FIXING SET	1
4	52293632			FIXING SET	1
5	52293633			FASTENER	3
6	52299176			END PLATE	2
7	-			NOT VALID FOR THIS PRODUCT!	

3 ROPE DRUM



003093_5

POS.	ITEM	FROM	TO	DESCRIPTION	PCS
1	52297341			COVER SET	1
2	52311580			ROPE	1
3	52283287			ROPE CLAMP	2
4	52293643			SHAFT SET	1
5	50000097			ROPE WEDGE	1
6	52293642			WEDGE HOUSING COMPLETE	1
7	52293244			ROPE GUIDE	1
8	52297325			FRAME	1
9	52293649			FIXING SET	1
10	52283338			SEALING	1
11	52271523			CAPSULE	2
12	52297343			BEARING SET	2
13	52283358			ROPE DRUM	1
14	52275310			ROPE CLAMP	3
15	52295757			SHAFT SET	4
16	52431953			ROLLER; GUIDE ROLLER	1

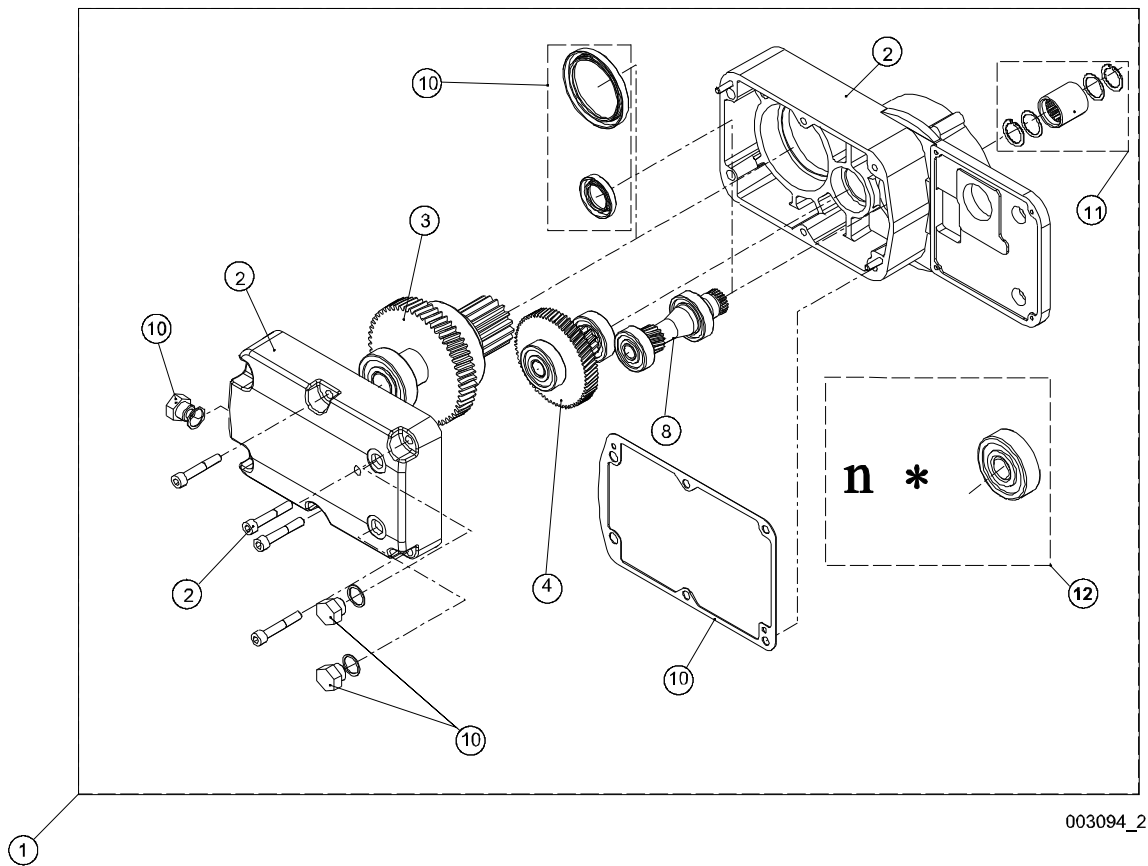


When ordering wire ropes please specify rope length. Original rope length is documented on Wire Rope Certificate.



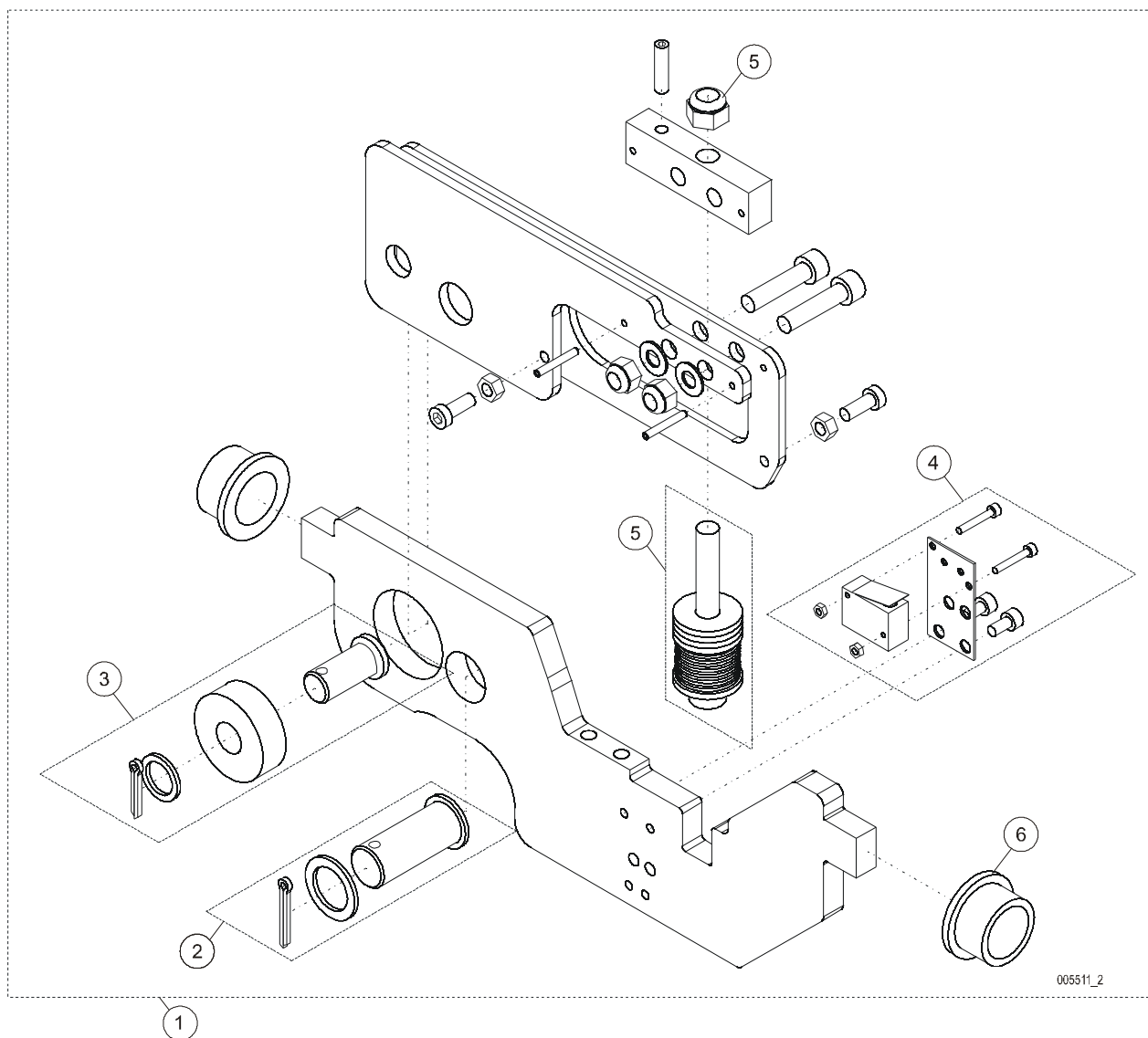
In two-rope systems (True Vertical Lift), replace both ropes simultaneously. Ensure that both ropes are exactly identical except right/left hand lay.

4 GEAR



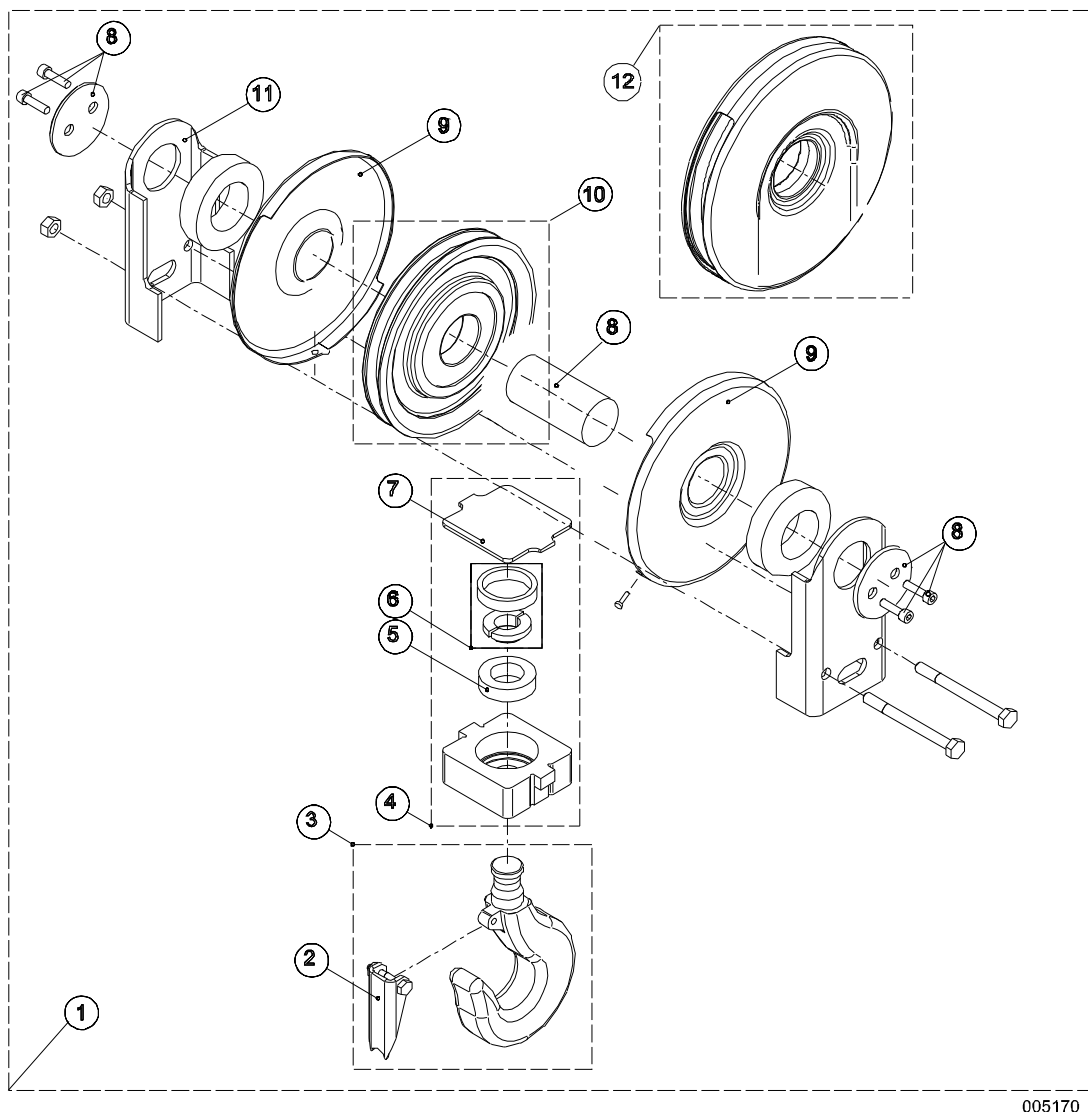
POS.	ITEM	FROM	TO	DESCRIPTION	PCS
1	52297403			GEAR	1
2	52292796			GEAR HOUSING	1
3	52411063			SHAFT ASSEMBLY	1
4	52275067			SHAFT ASSEMBLY	1
8	52275070			SHAFT ASSEMBLY	1
10	52307105			SEALING SET	1
11	60009778			COUPLING	1
12	52298294			BEARING SET	1

5 OVERLOAD DEVICE



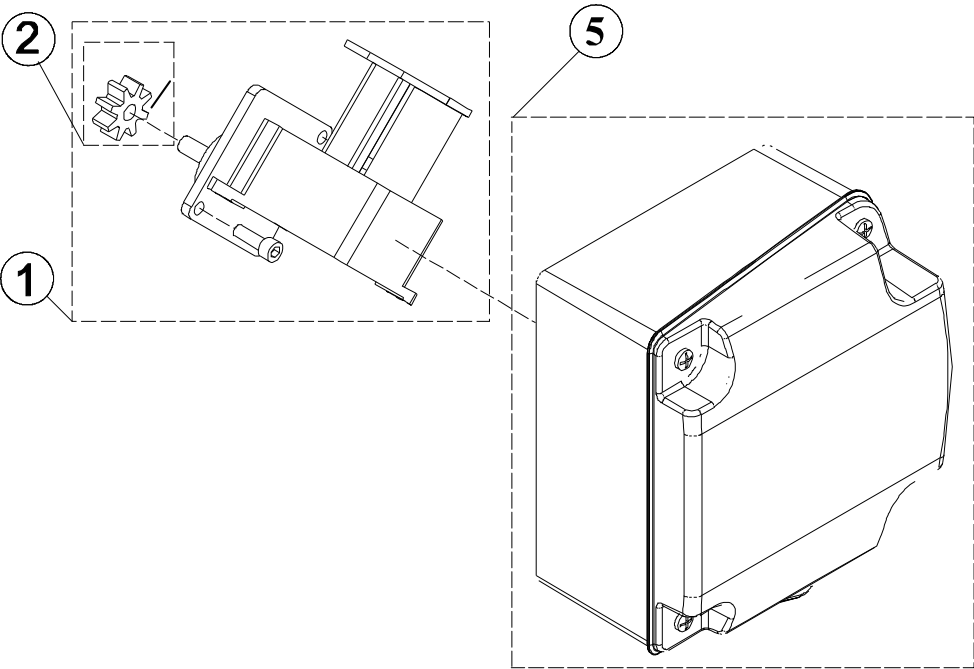
POS.	ITEM	FROM	TO	DESCRIPTION	PCS
1	52299895			OVERLOAD DEVICE	1
2	52293643			SHAFT SET	1
3	52293655			SHAFT SET	1
4	52299878	H0206388		MICRO SWITCH	1
5	52316299	H0206388		SPRING SET	1
6	52283281			BEARING; RADIAL SLIDING BEARING	2

6 HOOK



POS.	ITEM	FROM	TO	DESCRIPTION	PCS
1	52301086			HOOK ASSEMBLY	1
2	52275320			SAFETY LATCH SET	1
3	52294060			HOOK	1
4	52302113	H0205677		CROSS BAR	1
5	60010408			BEARING; THRUST BEARING	1
6	52275333			LOCKING SET	1
7	52295746	H0205677		COVER PLATE	1
8	52302129	H0207869		SHAFT SET	1
9	52302133	H0207869		SIDE PLATE	1
10	52292219			SHEAVE; ROPE SHEAVE	1
11	52298516	H0205677		SIDE PLATE	1
12	52302142	H0207869		SHEAVE; ROPE SHEAVE	1

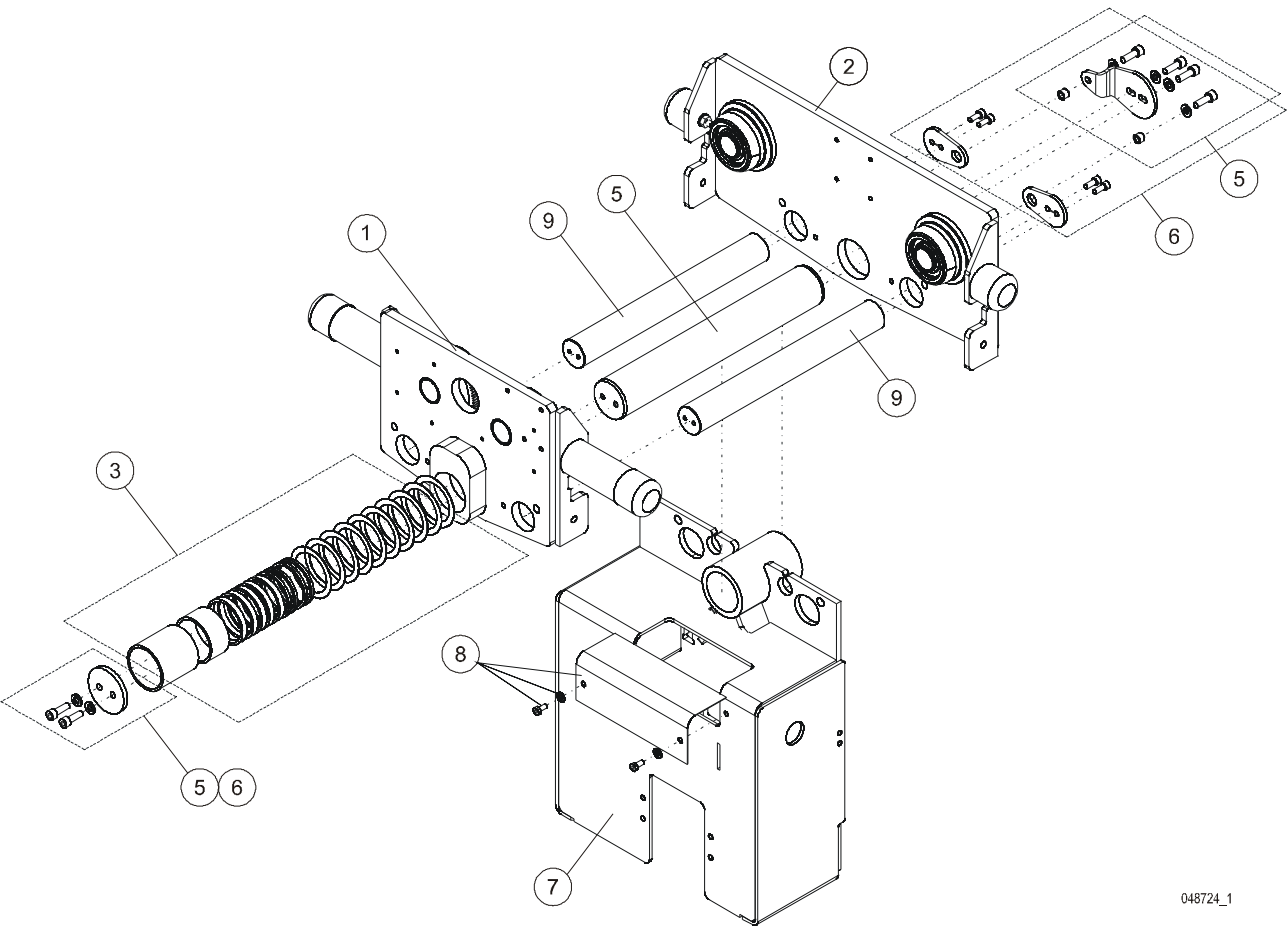
7 HOISTING LIMIT SWITCH



003103_2

POS.	ITEM	FROM	TO	DESCRIPTION	PCS
1	52288503			LIMIT SWITCH	1
2	52293675			GEAR WHEEL SET	1
5	52312351			JUNCTION BOX	1

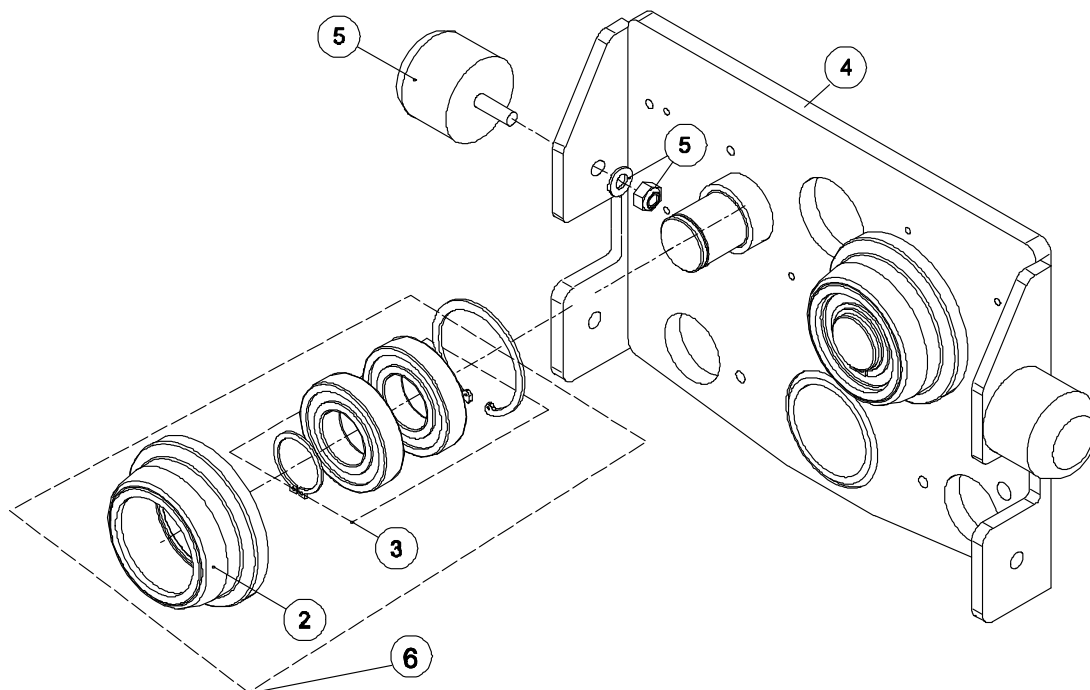
8 TROLLEY



048724_1

POS.	ITEM	FROM	TO	DESCRIPTION	PCS
1	52330550			SIDE PLATE	1
2	52328166			SIDE PLATE	1
2	52330553			SIDE PLATE	1
3	52339742			SLEEVE SET	1
5	52368077			SHAFT SET	1
6	52295126			FIXING PLATE	1
7	52293591			FRAME	1
8	52295128			FIXING SET	1
9	52339191			SHAFT	1

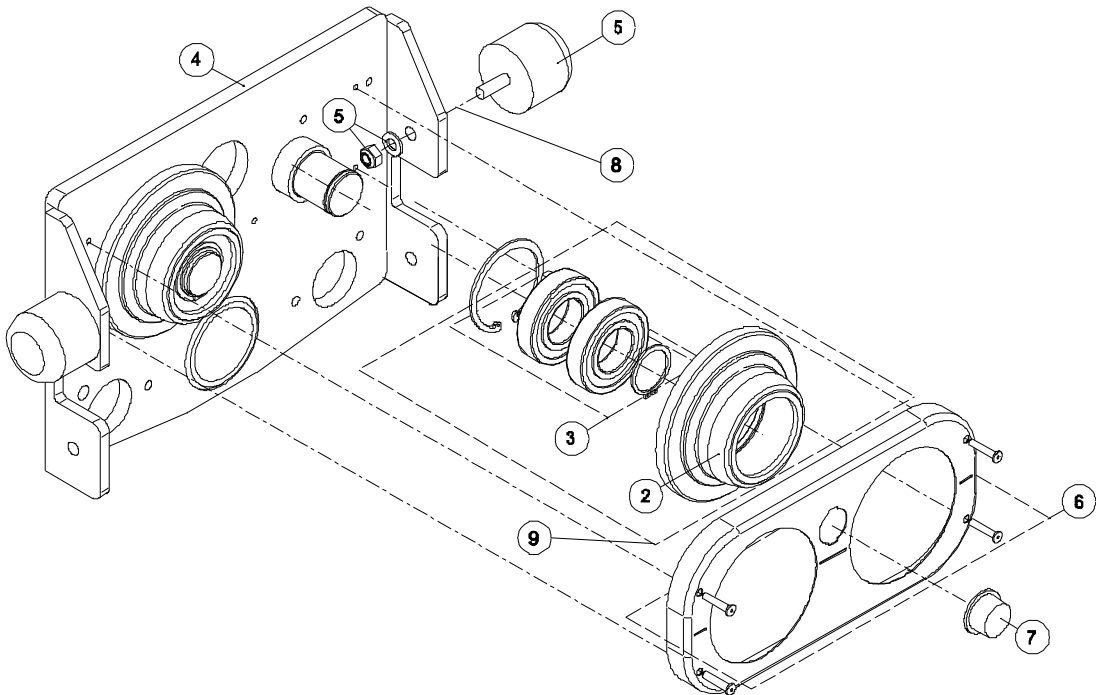
9 TROLLEY, SIDE PLATE



000070 1

POS.	ITEM	FROM	TO	DESCRIPTION	PCS
2	52288016			TRAVEL WHEEL; IDLE	2
3	52293577			BEARING SET	2
4	52328164			SIDE PLATE	1
5	52293581			BUFFER	2
6	52293937			WHEEL SET; IDLE	2

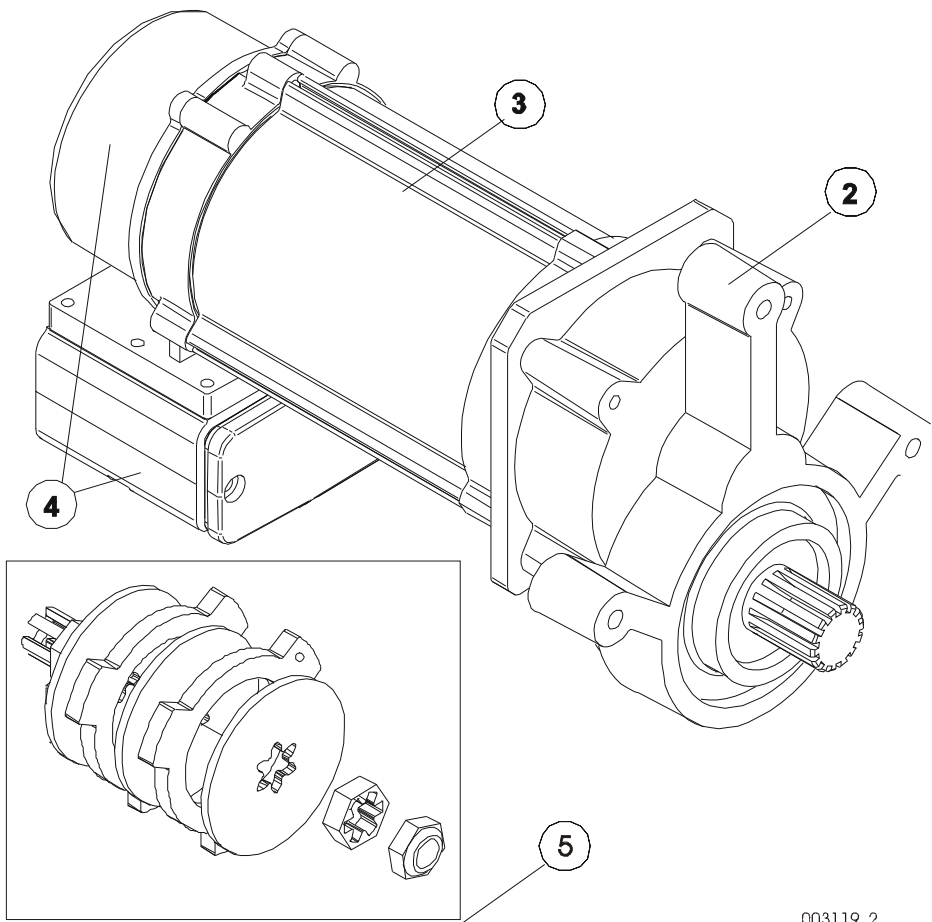
10TROLLEY, SIDE PLATE



000069_1

POS.	ITEM	FROM	TO	DESCRIPTION	PCS
2	52288015			TRAVEL WHEEL; DRIVING	2
3	52293577			BEARING SET	1
4	52283230			SIDE PLATE	1
5	52293581			BUFFER	1
6	52298203			COVER SET	1
7	52294869			CAP	1
8	52293673			BUFFER EXTENSION	2
9	52293941			WHEEL SET; DRIVING	2

11 TRAVELLING MACHINERY

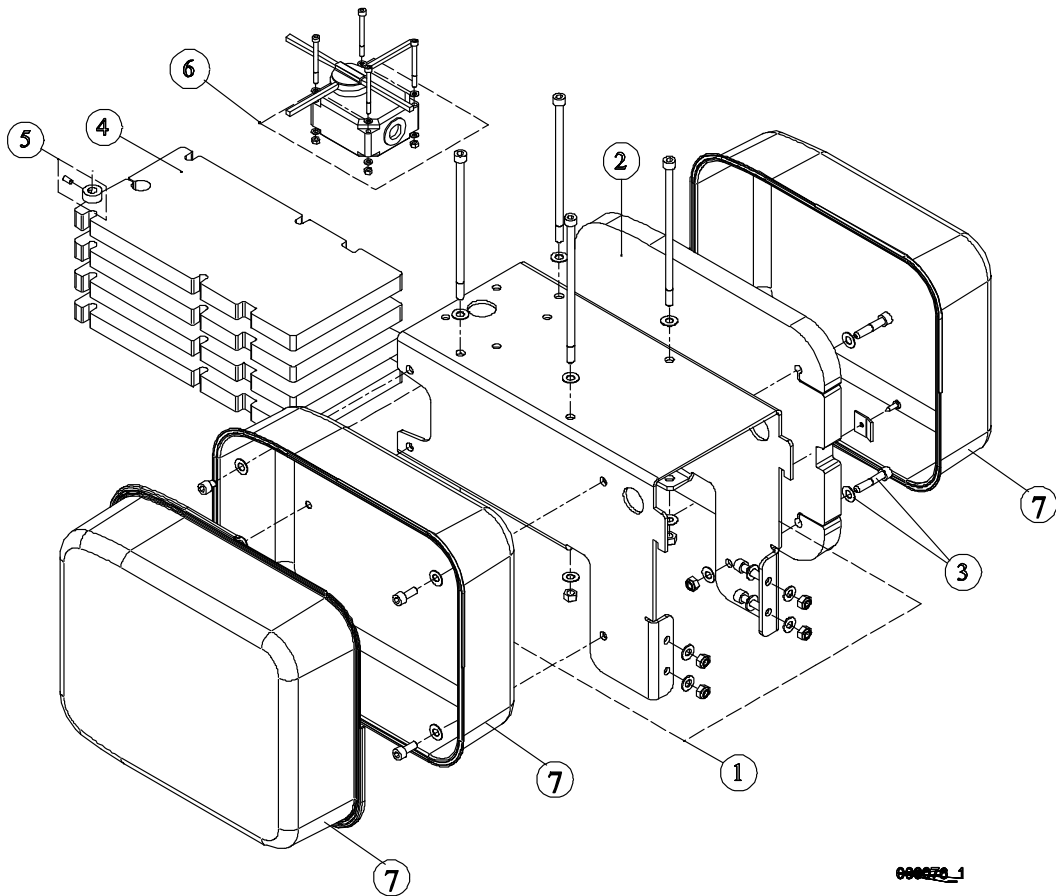


003119_2

 When ordering motors please specify motor serial number

POS.	ITEM	FROM	TO	DESCRIPTION	PCS
2	52260487	H0315168		GEAR	1
3	->			SPECIFY DEVICE SERIAL NUMBER WHEN ORDERING!	
4	52296524	H0315168		TERMINAL BOX	1
5	52296293			BRAKE REPAIR SET	1

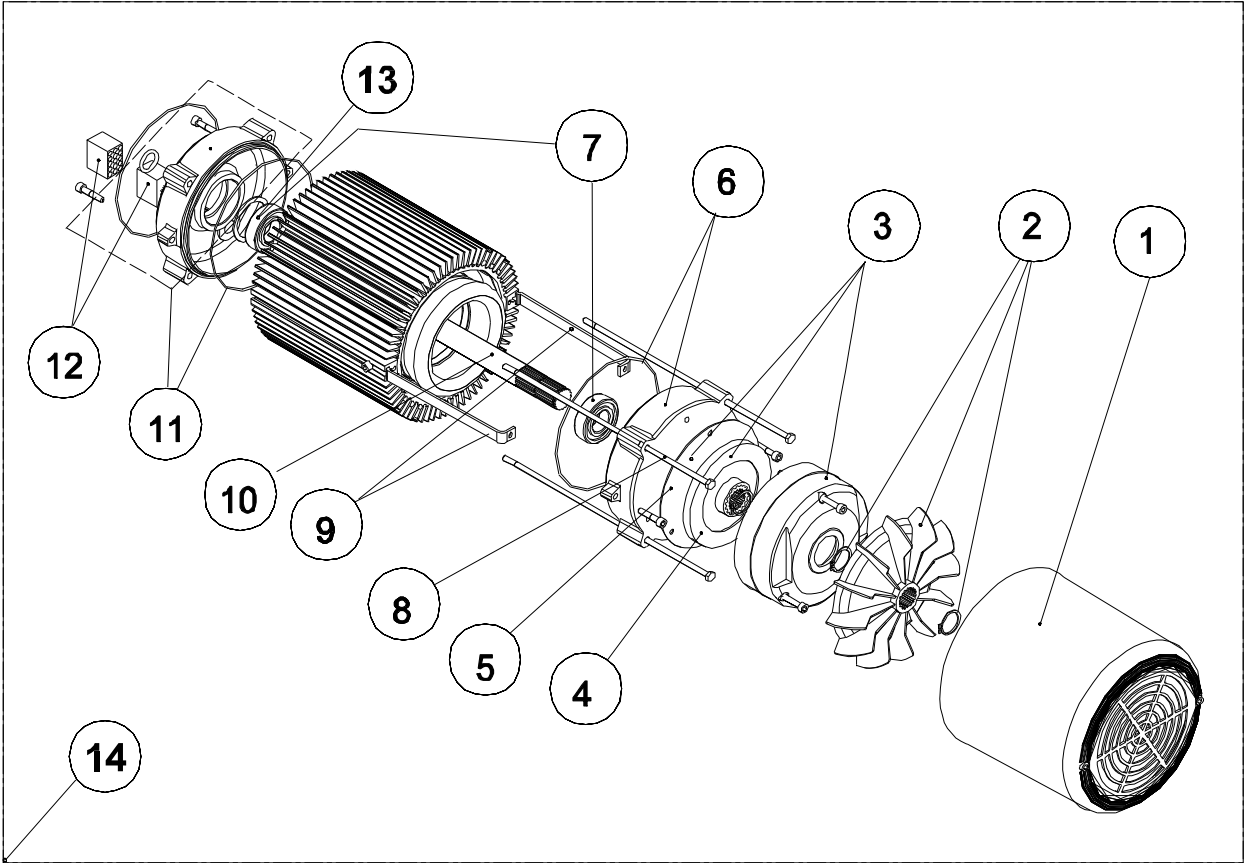
12ELECTRIC PANEL



000020_1

POS.	ITEM	FROM	TO	DESCRIPTION	PCS
1	52298688			SUPPORT	1
2	52260267			COUNTERWEIGHT	1
3	52298707			SCREW SET	1
4	52292346			COUNTERWEIGHT	1
5	52299806			LOCKING SET	1
6	52294478			LIMIT SWITCH	1
7	--			SEE ELECTRICAL PART LIST!	1

13MOTOR



003133_1

 When ordering motors please specify motor serial number

POS.	ITEM	FROM	TO	DESCRIPTION	PCS
1	52295484			CAPSULE	1
2	52263106			FAN	1
3	52318369			BRAKE	1
4	52314609			BRAKE DISC SET	1
5	52295845			FRICTION DISC	1
6	52292741			FLANGE	1
7	52263121			BEARING SET	1
8	52293907			SCREW SET	1
9	52263115			SUPPORT	1
10	52292738			SHAFT ASSEMBLY	1
11	52292740			FLANGE	1
12	52303467			PLUG	1
13	-			NOT VALID FOR THIS PRODUCT!	
14	->			SPECIFY DEVICE SERIAL NUMBER WHEN ORDERING!	