

# SPARE PART CATALOGUE FOR HOIST CXT10210010PX5EBL0F

English/ 782899-0.ORD/ 20.7.2010

HKZ16392/26023/26023/26023





Read the instructions supplied with the product before installation and commissioning.



Keep the instructions in a safe place for future reference.

#### Table of content

<b>1</b>	<b>General .....</b>	<b>3</b>
1.1	Symbols and abbreviations .....	3
1.2	Spare part order .....	3
<b>2</b>	<b>Rope drum .....</b>	<b>4</b>
<b>3</b>	<b>Gear .....</b>	<b>5</b>
<b>4</b>	<b>Wedge housing suspension .....</b>	<b>6</b>
<b>5</b>	<b>Overload device .....</b>	<b>7</b>
<b>6</b>	<b>Hook .....</b>	<b>8</b>
<b>7</b>	<b>Hoisting limit switch .....</b>	<b>9</b>
<b>8</b>	<b>Hook operated limit switch .....</b>	<b>10</b>
<b>9</b>	<b>Trolley .....</b>	<b>11</b>
<b>10</b>	<b>Travelling machinery .....</b>	<b>12</b>
<b>11</b>	<b>Electric panel .....</b>	<b>13</b>
<b>12</b>	<b>Motor .....</b>	<b>14</b>
<b>13</b>	<b>Pushbutton controller .....</b>	<b>15</b>

# 1 GENERAL

## 1.1 Symbols and abbreviations

The following symbols are used in the instructions:



**Warning!**



**Caution**

## 1.2 Spare part order



When ordering spare parts please specify:

- spare part number
- description
- product serial number
- complete product type
- date of manufacture



If spare part position is referred on drawing but not on list below contact your spare part supplier.

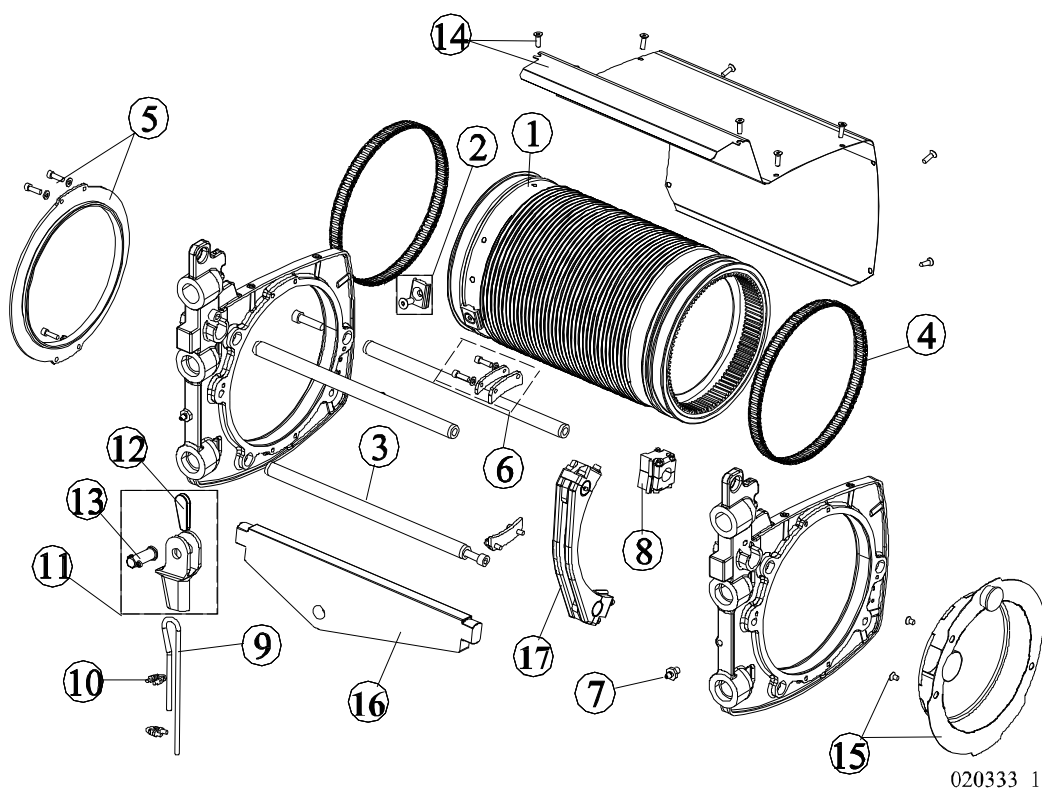


**Always use manufacturer's original spare parts**



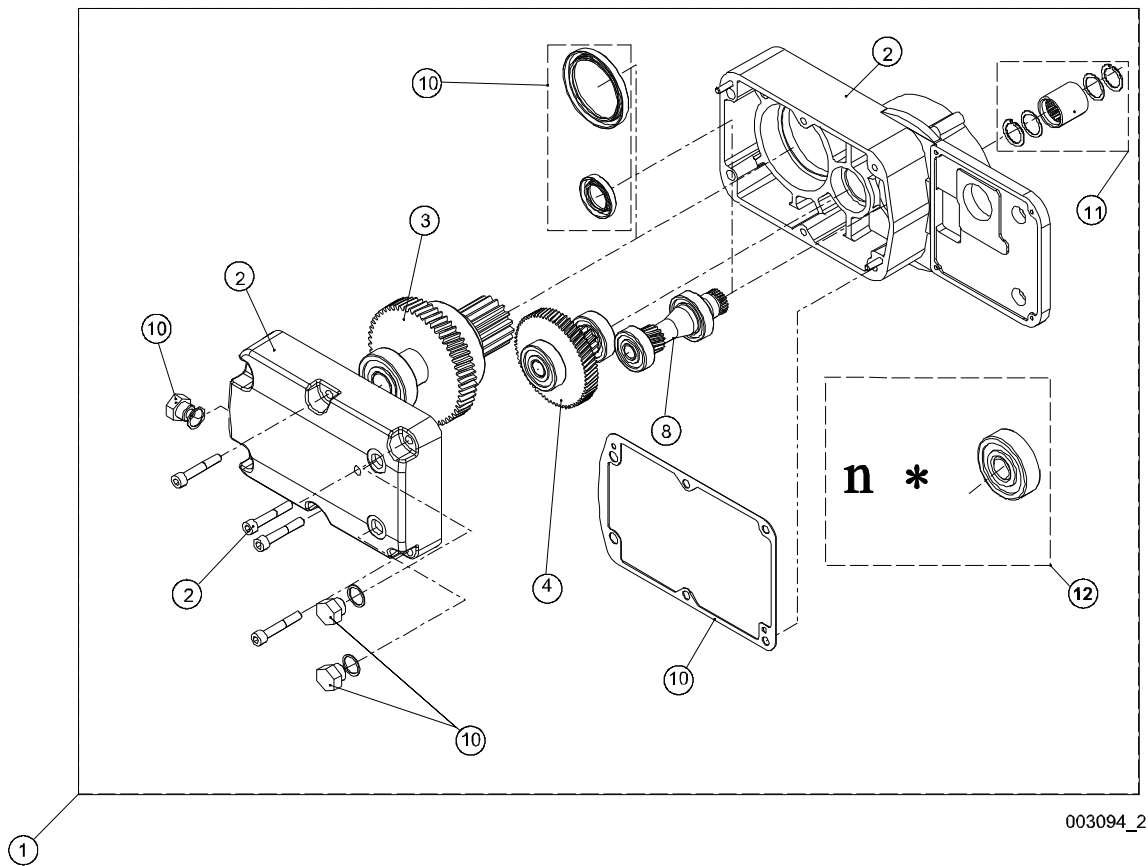
**Includes standard model spare parts only! If the hoist is special, use the special drawings to specify spare parts for special assemblies.**

## 2 ROPE DRUM



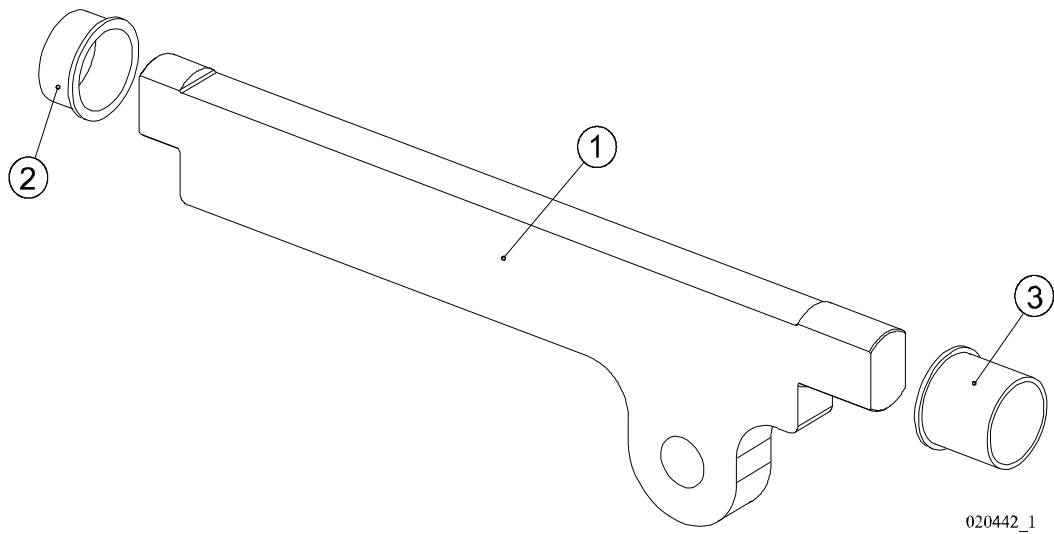
POS.	ITEM	FROM	TO	DESCRIPTION	PCS
1	52321381			ROPE DRUM	1
2	52275310			ROPE CLAMP	2
3	52324891			SHAFT	3
4	52324895			BEARING SET	2
5	52324896			COVER	1
6	52324897			FIXING SET	1
7	52257887			NIPPLE	2
8	52324898			ROPE GUIDE	1
9	52261721			ROPE	1
10	52253038			ROPE CLAMP	2
11	52275304			WEDGE HOUSING	1
12	50000056			ROPE WEDGE	1
13	52275303			SHAFT	1
14	52324904			COVER SET	1
15	52324907			COVER	1
16	-			NOT VALID FOR THIS PRODUCT!	
17	52340652			ROPE GUIDE	1

3 GEAR



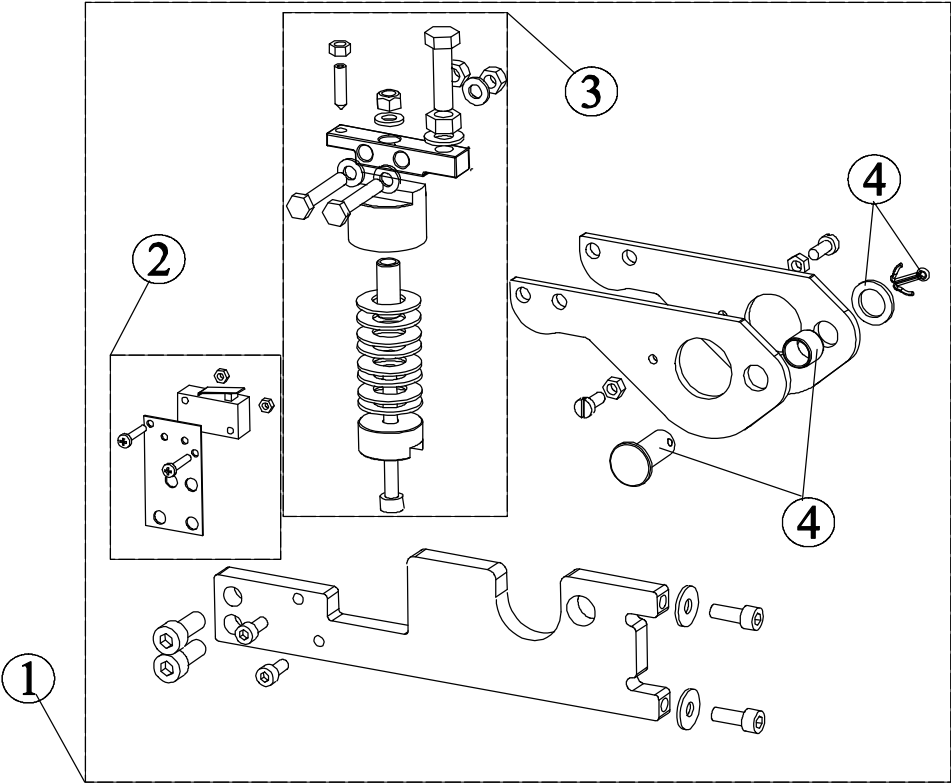
POS.	ITEM	FROM	TO	DESCRIPTION	PCS
1	52325206			GEAR	1
2	52326728			GEAR HOUSING	1
3	52326760			SHAFT ASSEMBLY	1
4	52326762			SHAFT ASSEMBLY	1
8	52326780			SHAFT ASSEMBLY	1
10	52326784			SEALING SET	1
11	60009778			COUPLING	1
12	52326792			BEARING SET	1

4 WEDGE HOUSING SUSPENSION



POS.	ITEM	FROM	TO	DESCRIPTION	PCS
1	52318869			WEDGE HOUSING SUSPENSION	
2	52319332			SLEEVE	
3	52319331			SLEEVE	

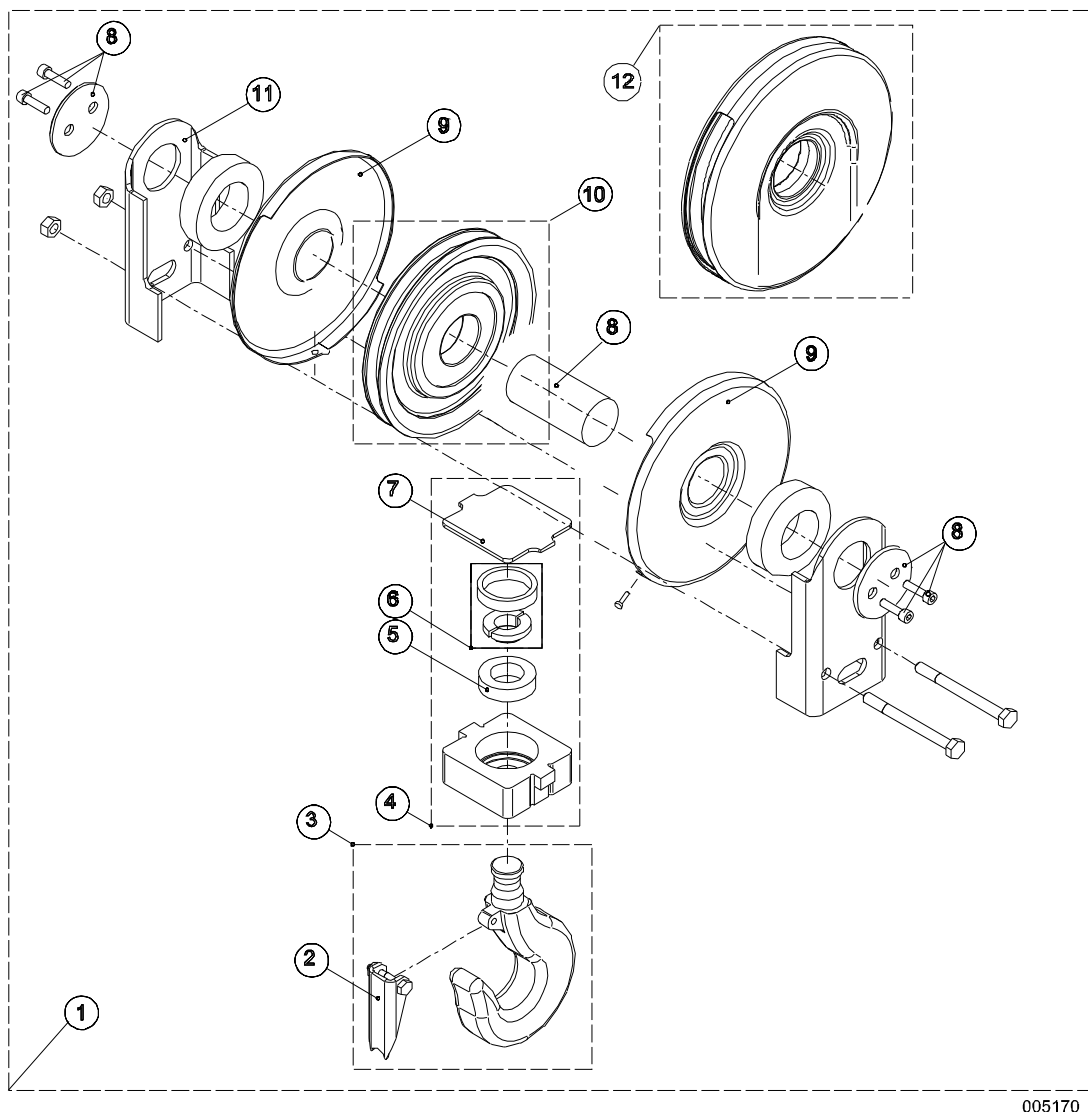
5 OVERLOAD DEVICE



020261\_1

POS.	ITEM	FROM	TO	DESCRIPTION	PCS
1	52324805			OVERLOAD DEVICE	1
2	52299878			MICRO SWITCH	1
3	52324806			SPRING SET	1
4	52324807			SHAFT SET	1

## 6 HOOK

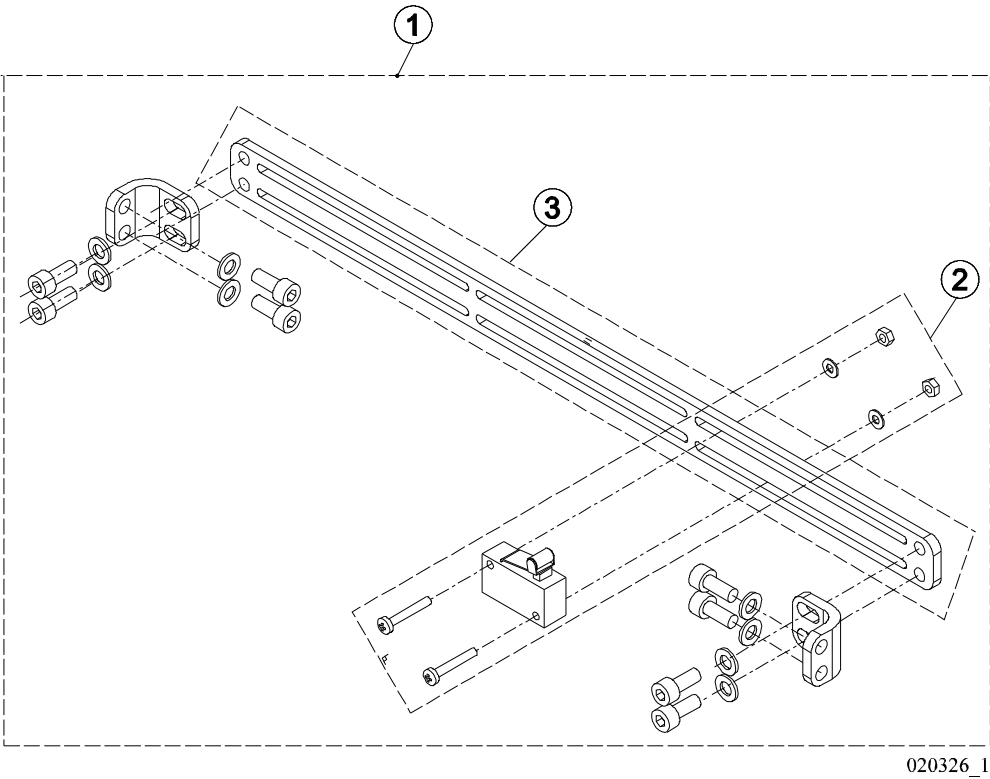


005170\_1

POS.	ITEM	FROM	TO	DESCRIPTION	PCS
1	52301082			HOOK ASSEMBLY	1
2	52354734			SAFETY LATCH SET	1
3	52275321			HOOK	1
4	52275331			CROSS BAR	1
5	60010408			BEARING; THRUST BEARING	1
6	52275333			LOCKING SET	1
7	52252810			COVER PLATE	1
8	52303360	H0209453		SHAFT SET	1
9	52303364	H0209453		COVER PLATE	1
10	52296584			SHEAVE; ROPE SHEAVE	1
11	52275337			SIDE PLATE	1
12	52303366	H0209453		SHEAVE; ROPE SHEAVE	1

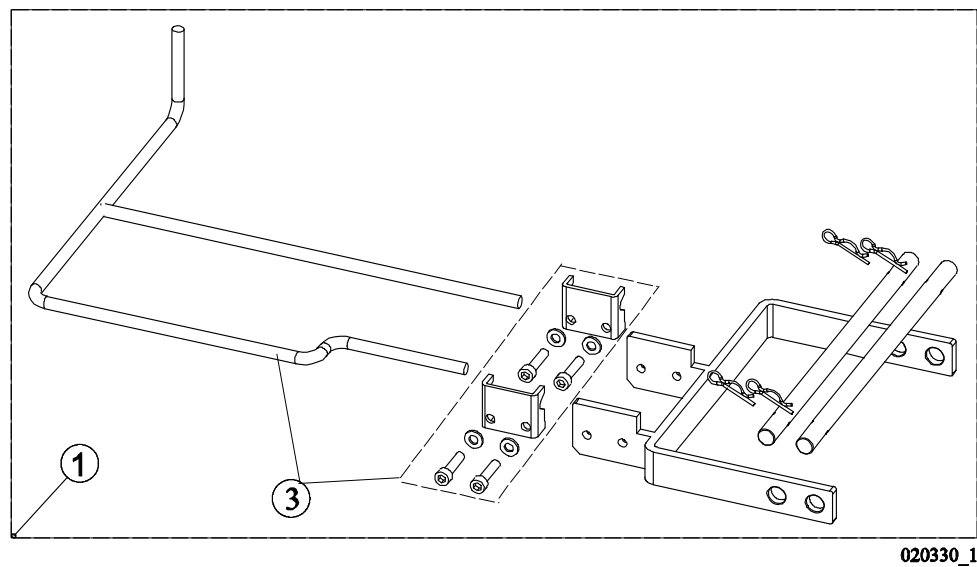


7 HOISTING LIMIT SWITCH



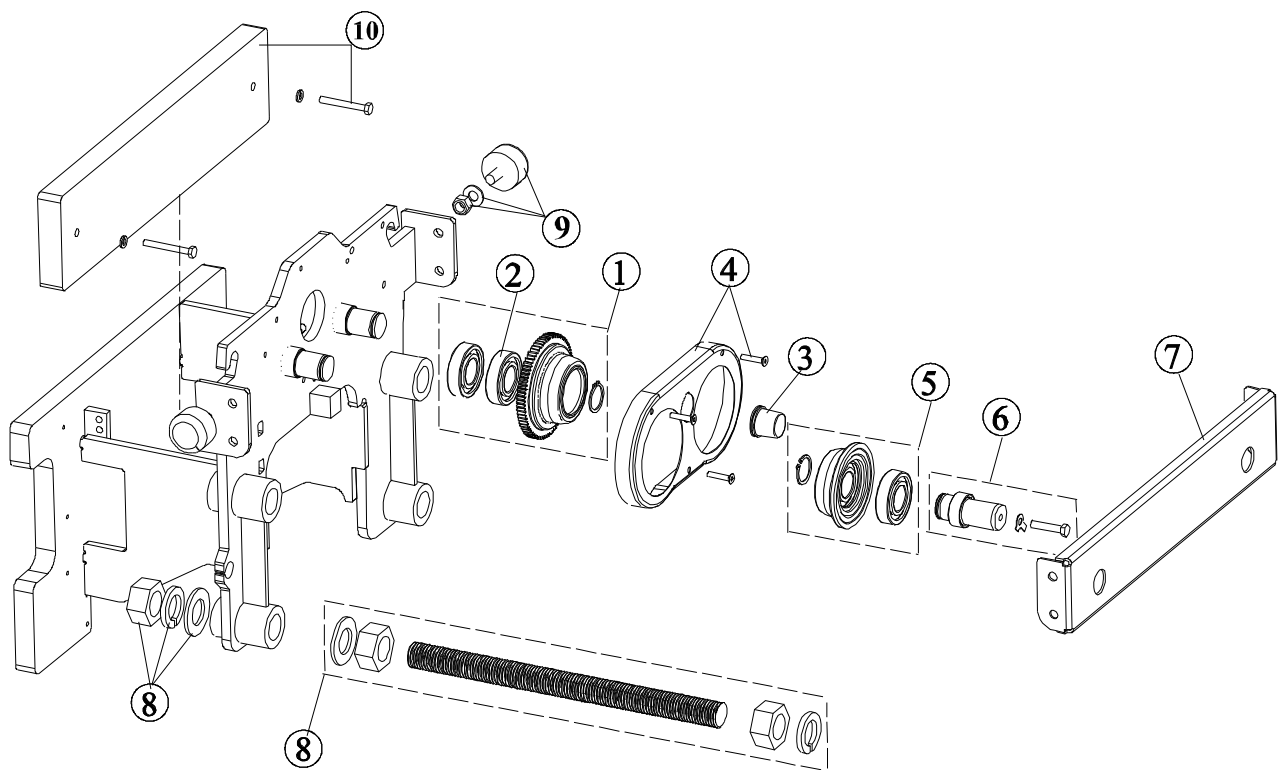
POS.	ITEM	FROM	TO	DESCRIPTION	PCS
1	52324830			LIMIT SWITCH EQUIPMENT	1
2	52324836			LIMIT SWITCH	1
3	52320791			FIXING PLATE	1

8 HOOK OPERATED LIMIT SWITCH



POS.	ITEM	FROM	TO	DESCRIPTION	PCS
1	52324864			LIMIT SWITCH	1
3	52324866			TRIGGER	1

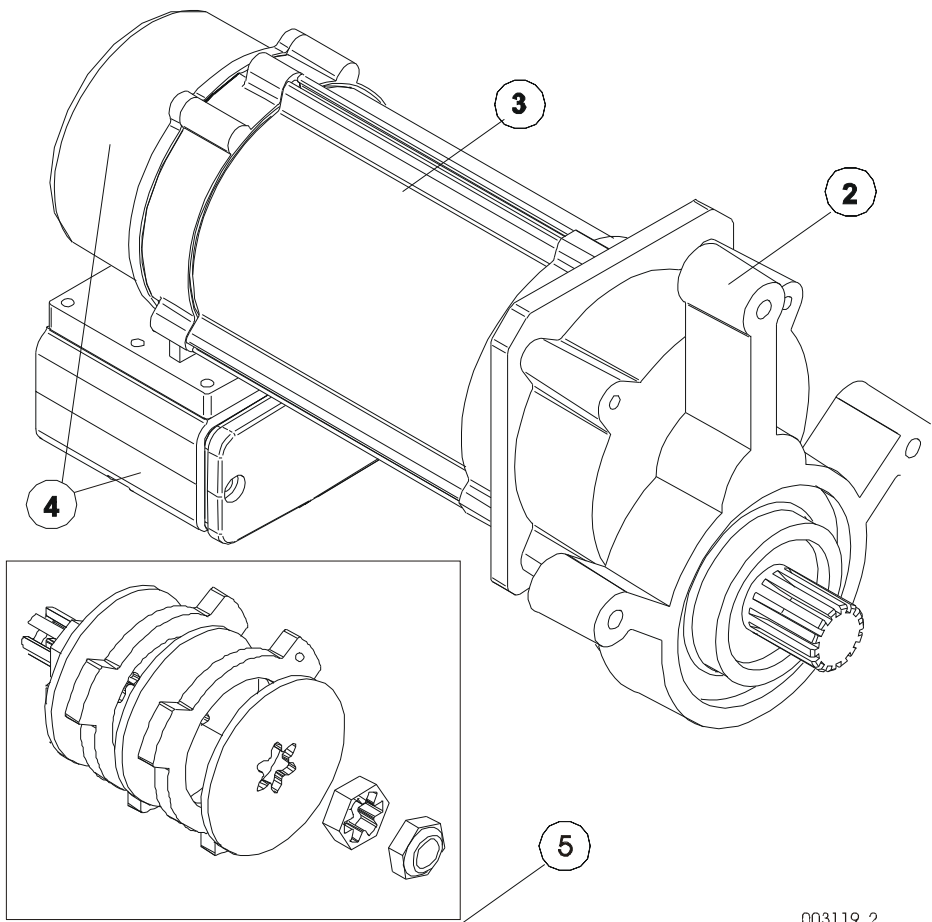
9 TROLLEY



020307\_1

POS.	ITEM	FROM	TO	DESCRIPTION	PCS
1	52324814			TRAVEL WHEEL; DRIVING	2
2	60026317			BEARING; DEEP GROOVE BALL BEARING	2
3	52294869			CAP	1
4	52324819			COVER	1
5	52324821			TRAVEL WHEEL; IDLE	2
6	52324822			SHAFT SET	2
7	52322128			JOINT PROFILE	1
8	52331898			SCREW ROD	1
9	52275366			BUFFER	4
10	-			NOT VALID FOR THIS PRODUCT!	

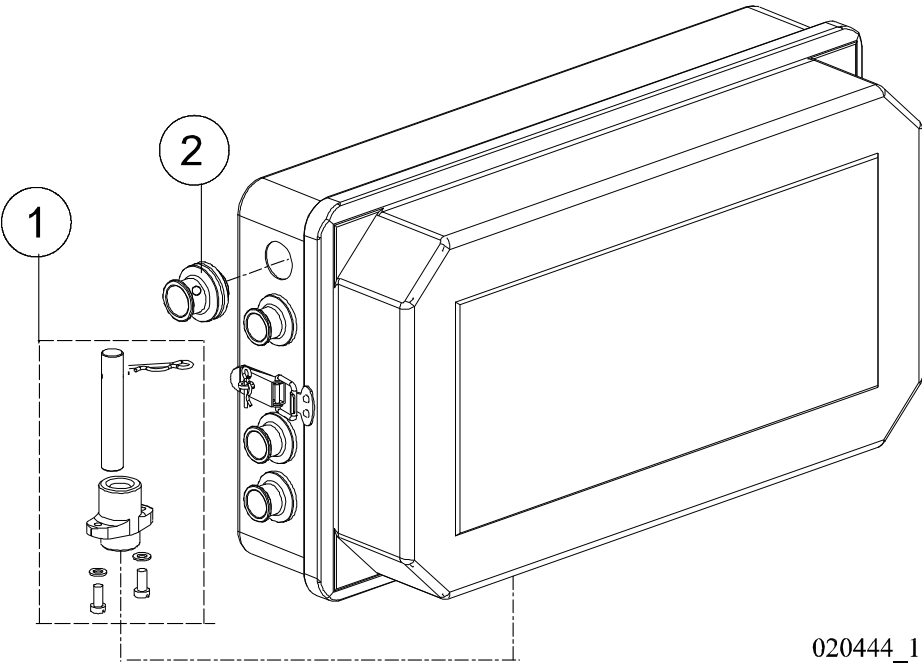
10TRAVELLING MACHINERY



 When ordering motors please specify motor serial number

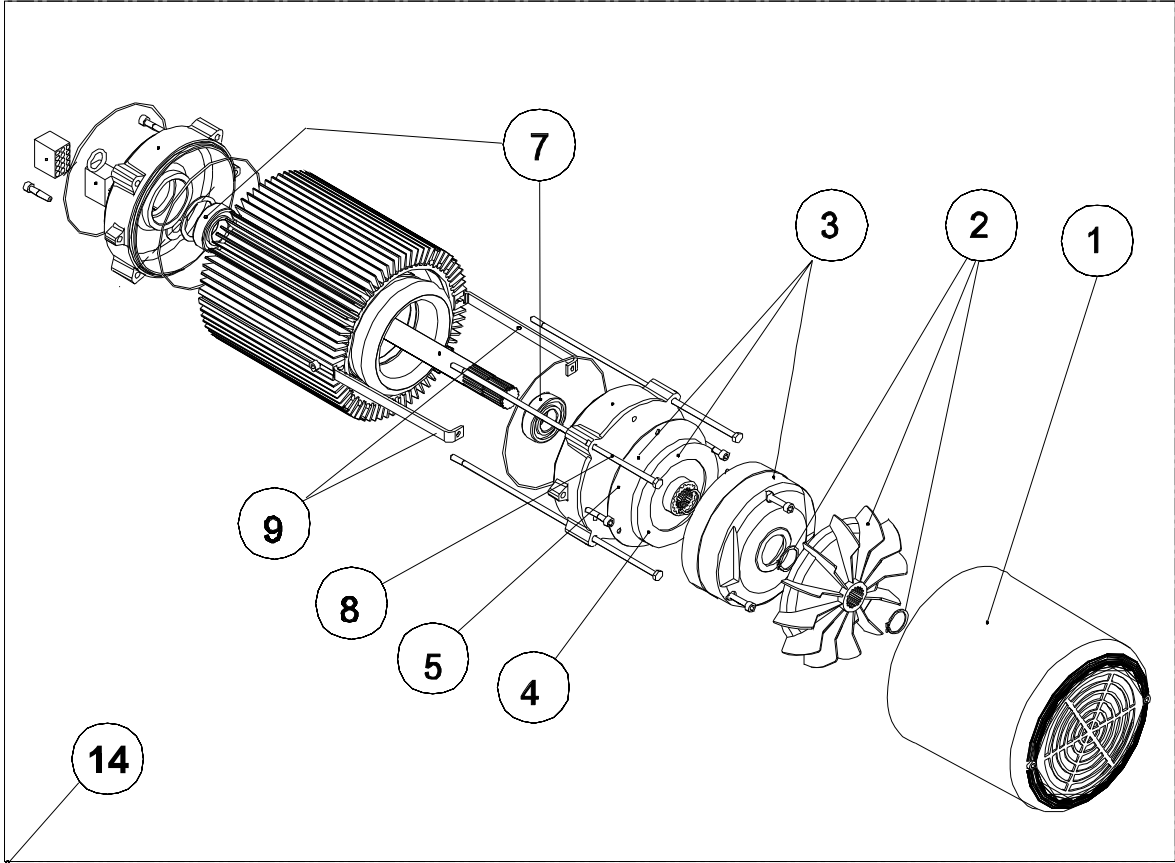
POS.	ITEM	FROM	TO	DESCRIPTION	PCS
2	52260487	H0315168		GEAR	1
3	->			SPECIFY DEVICE SERIAL NUMBER WHEN ORDERING!	
4	52296524	H0315168		TERMINAL BOX	1
5	-			NOT VALID FOR THIS PRODUCT!	

11 ELECTRIC PANEL



POS.	ITEM	FROM	TO	DESCRIPTION	PCS
1	52324865			BEARING SET	1
2	52321393			GROMMET	7

12MOTOR



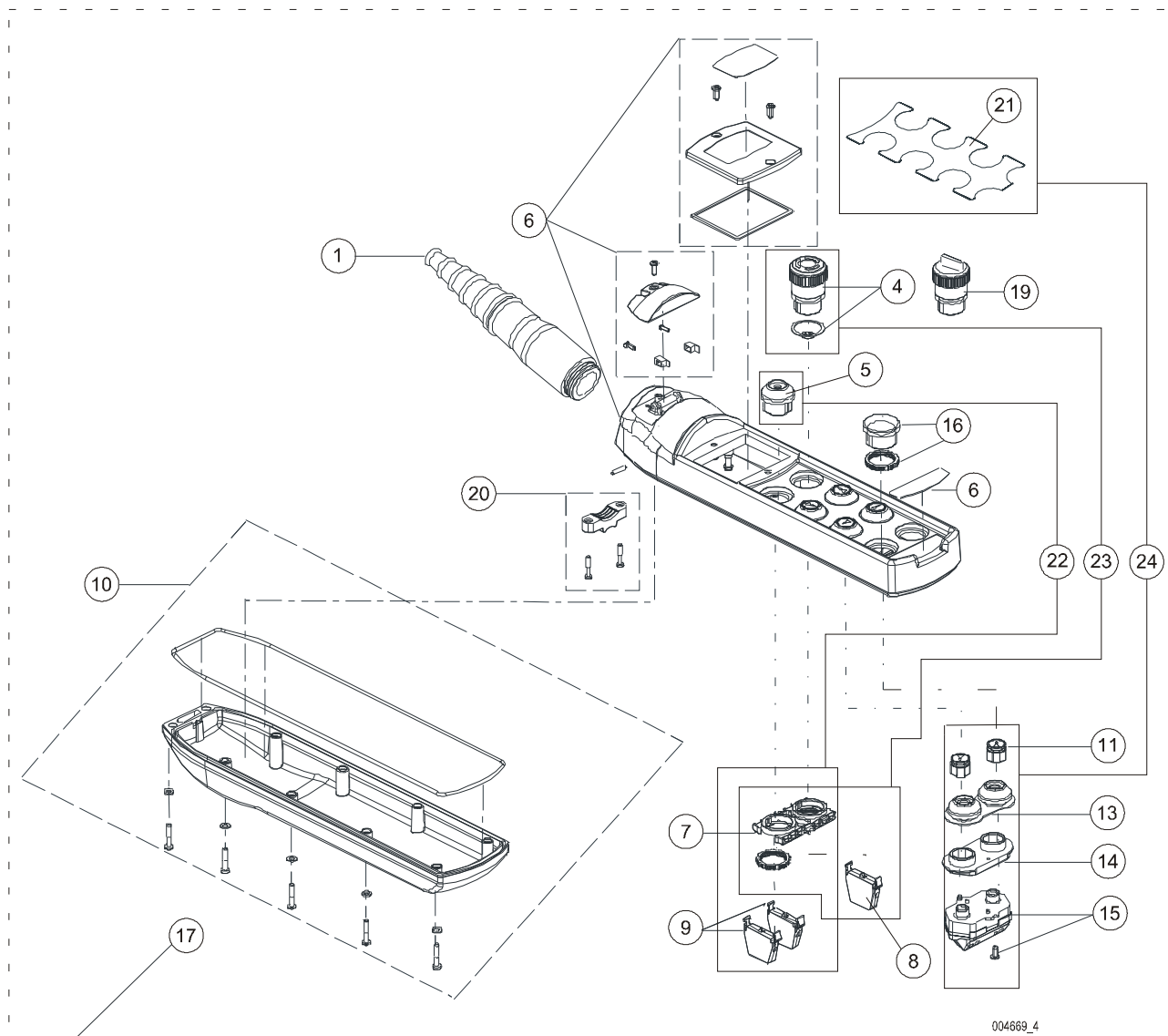
020365\_1



When ordering motors please specify motor serial number

POS.	ITEM	FROM	TO	DESCRIPTION	PCS
1	52324996			COVER	1
2	52324998			FAN	1
3	52329587			BRAKE	1
4	52314608			BRAKE DISC SET	1
5	52295844			FRICTION DISC	1
7	52324999			BEARING SET	1
8	52325043			SCREW SET	1
9	52263115			SUPPORT	1
14	->			SPECIFY DEVICE SERIAL NUMBER WHEN ORDERING!	

# 13PUSHBUTTON CONTROLLER



POS.	ITEM	FROM	TO	DESCRIPTION	PCS
1	52299990			SLEEVE	1
4	52292954			MUSHROOM PUSH BUTTON	1
5	52339508			PUSH BUTTON	1
6	52299970			COVER	1
7	52299987			COVER	2
8	52292951			CONTACT BLOCK	1
9	52292950			CONTACT BLOCK	2
10	52299969			COVER	1
11	52339506			PUSH BUTTON	1
13	52299959			PUSH BUTTON	1
14	52299960			PLATE	3
15	52292952			CONTACT BLOCK	1
16	-			NOT VALID FOR THIS PRODUCT!	
17	52312605			PENDANT CONTROLLER	1
19	-			NOT VALID FOR THIS PRODUCT!	
20	52313929			CLAMP	1

21	52334379	STICKER	1
22	52371117	BUTTON	1
23	52371118	BUTTON	1
24	52371120	BUTTON	1