

SPARE PART CATALOGUE FOR HOIST CXT20210008P16FAFOF

English/ 784118-0.ORD/ 20.7.2010

HKY77594/111013/C5786/14.07.2010/111013





Read the instructions supplied with the product before installation and commissioning.



Keep the instructions in a safe place for future reference.

Table of content

1 General 3

1.1 Symbols and abbreviations 3

1.2 Spare part order 3

2 Frame 4

3 Rope drum 5

4 Gear 7

5 Overload device 8

6 Hook 9

7 Hoisting limit switch 10

8 Motor 11

1 GENERAL

1.1 Symbols and abbreviations

The following symbols are used in the instructions:



Warning!



Caution

1.2 Spare part order



When ordering spare parts please specify:

- spare part number
- description
- product serial number
- complete product type
- date of manufacture



If spare part position is referred on drawing but not on list below contact your spare part supplier.

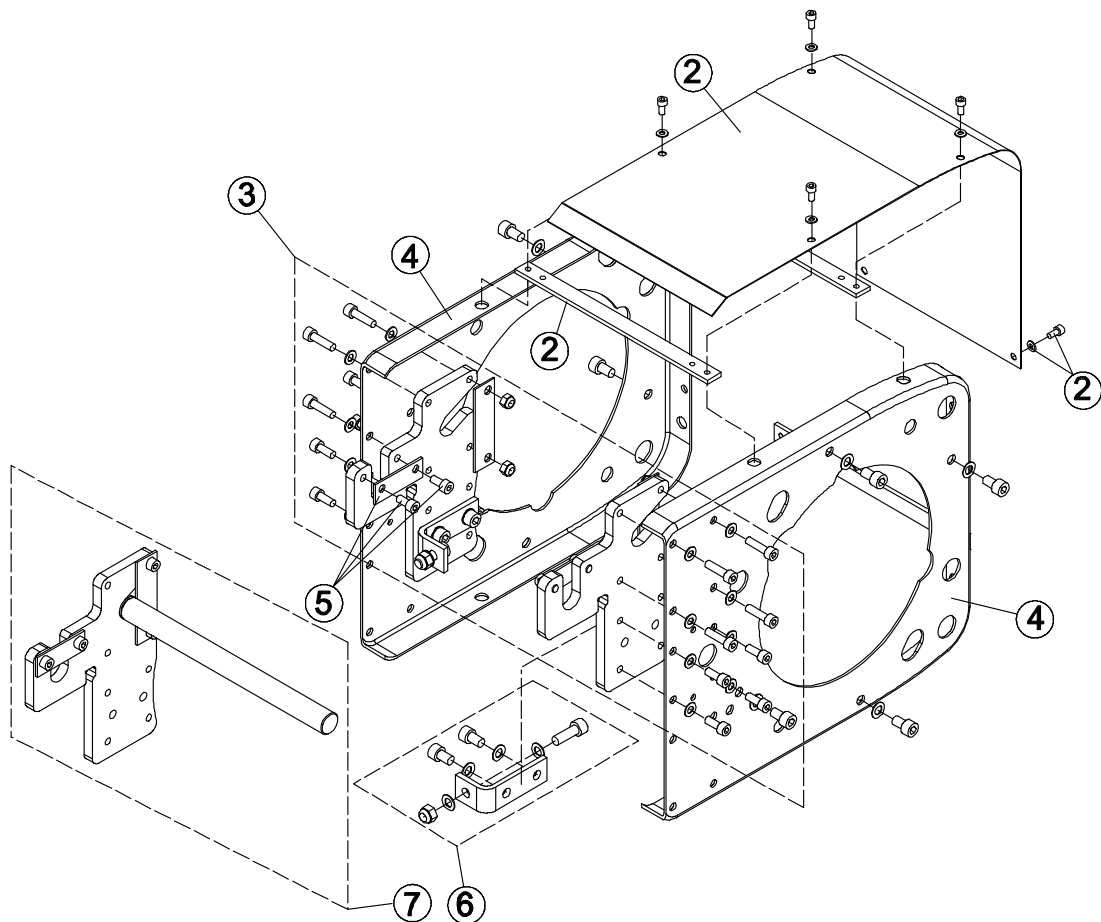


Always use manufacturer's original spare parts



Includes standard model spare parts only! If the hoist is special, use the special drawings to specify spare parts for special assemblies.

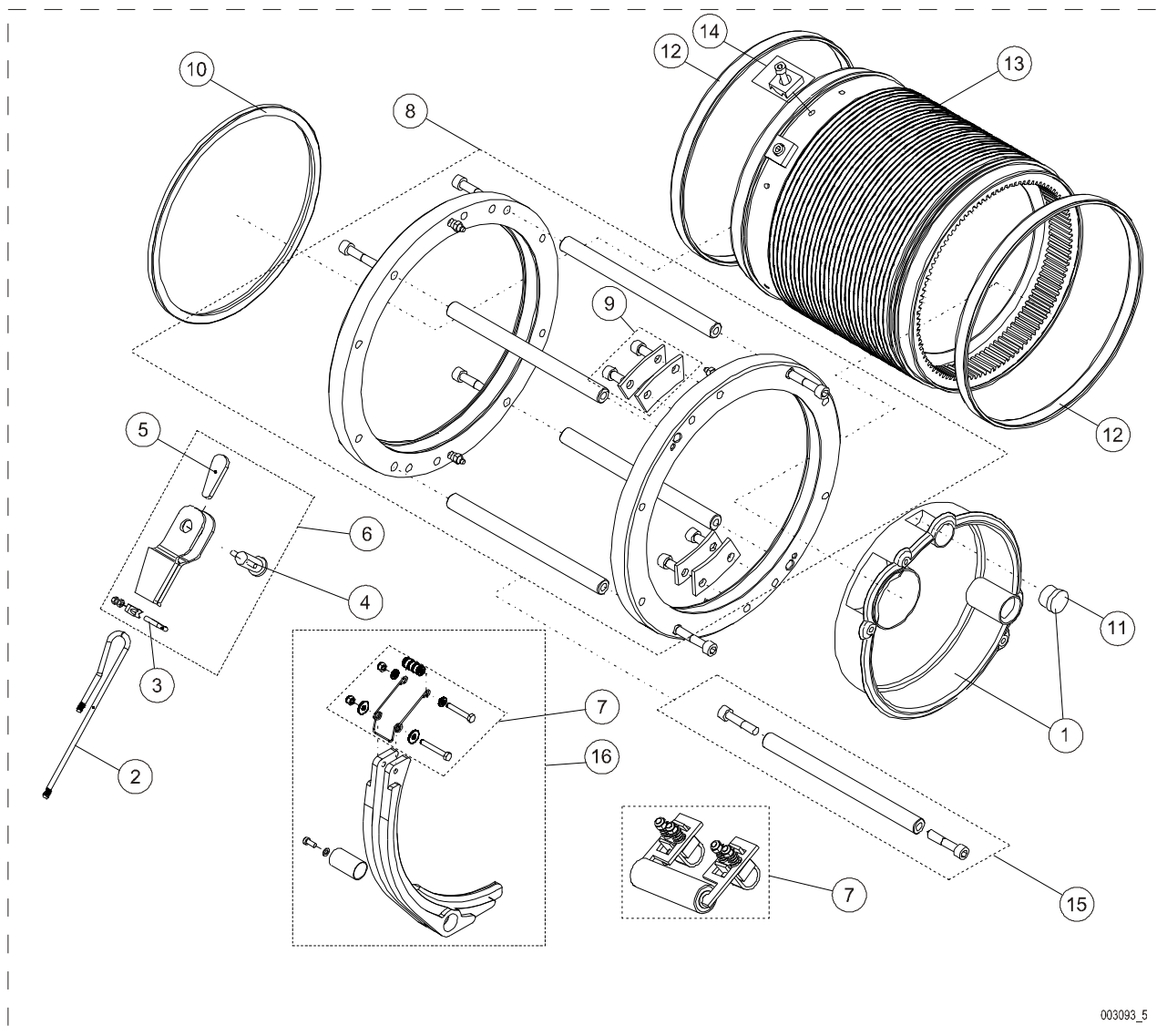
2 FRAME



003090_1

POS.	ITEM	FROM	TO	DESCRIPTION	PCS
2	52326417			COVER SET	1
3	52287892			FIXING SET	1
4	52299817			END PLATE	2
5	52299823			CLAMP	2
6	52299825			FASTENER	2
7	-			NOT VALID FOR THIS PRODUCT!	

3 ROPE DRUM



003093_5

POS.	ITEM	FROM	TO	DESCRIPTION	PCS
1	52296903			COVER SET	1
2	52334369			ROPE	1
3	52253038			ROPE CLAMP	2
4	52275303			SHAFT	1
5	50000056			ROPE WEDGE	1
6	52275304			WEDGE HOUSING	1
7	52294867			ROPE GUIDE	1
8	52275306			FRAME	1
9	52275307			FIXING SET	1
10	52264353			SEALING	1
11	52271523			CAPSULE	1
12	52275308			BEARING SET	2
13	52264305			ROPE DRUM	1
14	52275310			ROPE CLAMP	2
15	52295682			SHAFT SET	4
16	52431936			ROLLER; GUIDE ROLLER	1

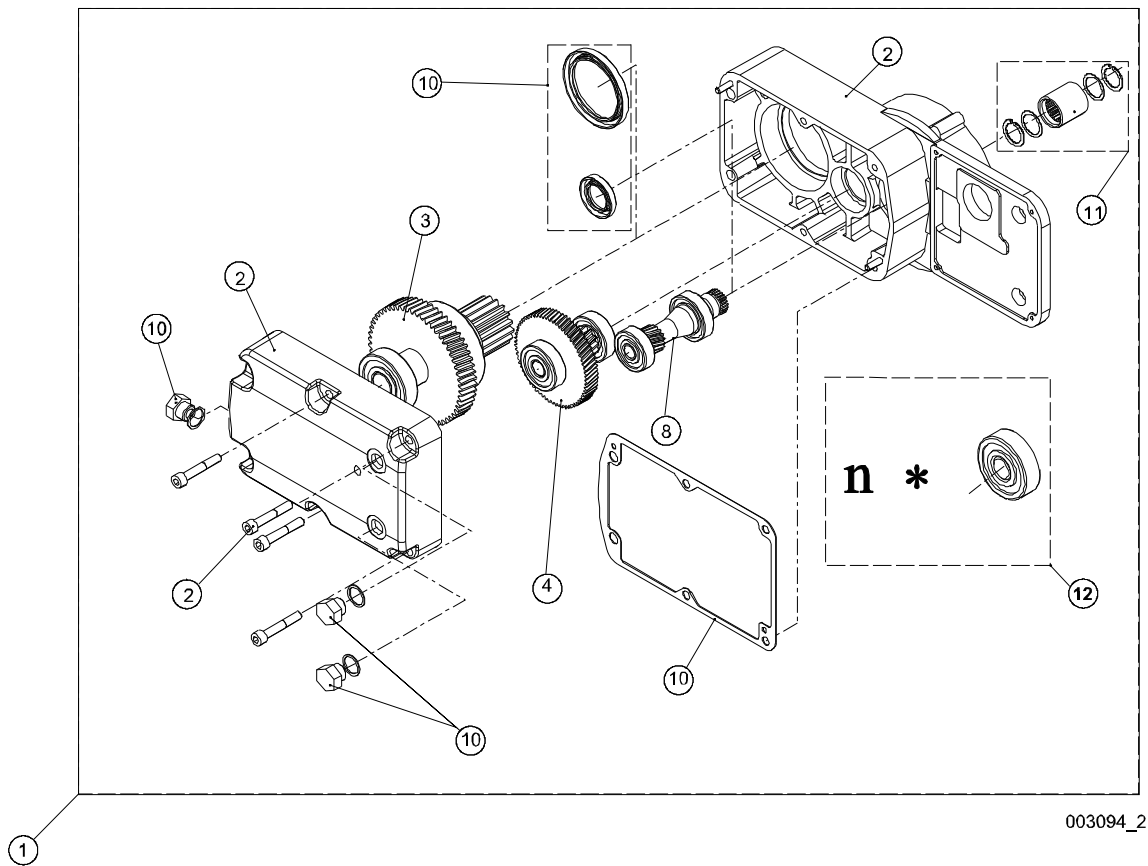


When ordering wire ropes please specify rope length. Original rope length is documented on Wire Rope Certificate.



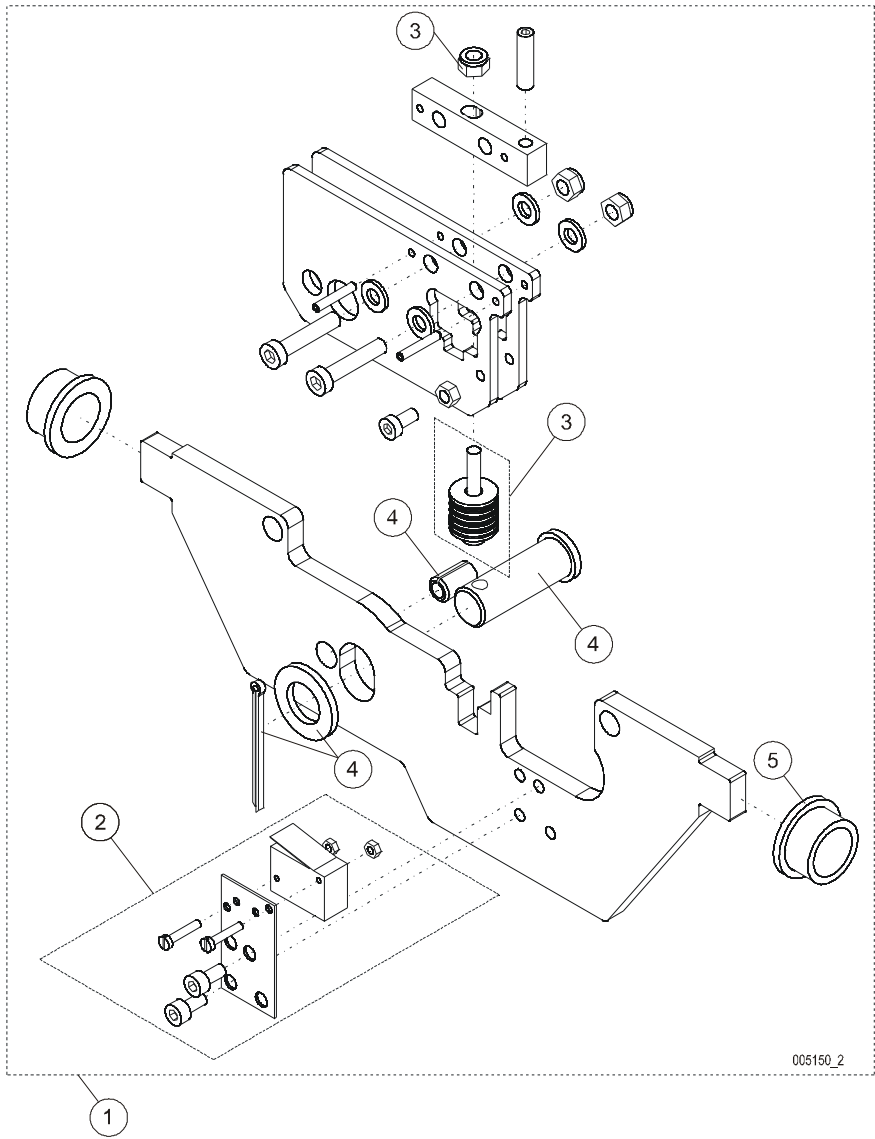
In two-rope systems (True Vertical Lift), replace both ropes simultaneously. Ensure that both ropes are exactly identical except right/left hand lay.

4 GEAR



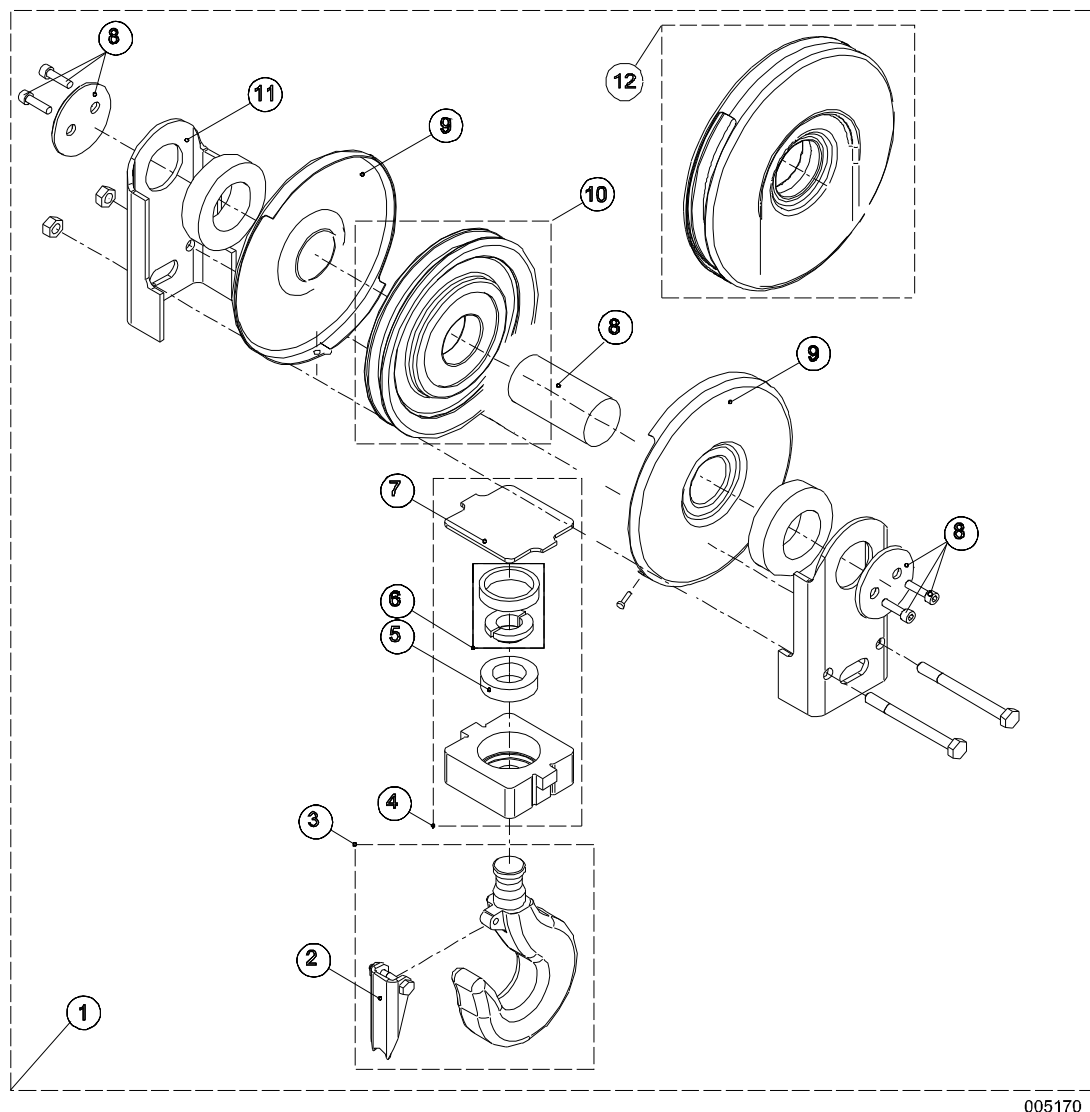
POS.	ITEM	FROM	TO	DESCRIPTION	PCS
1	52297397			GEAR	1
2	52275061			GEAR HOUSING	1
3	52411063			SHAFT ASSEMBLY	1
4	52275067			SHAFT ASSEMBLY	1
8	52275070			SHAFT ASSEMBLY	1
10	52275074			SEALING SET	1
11	60009778			COUPLING	1
12	52295705			BEARING SET	1

5 OVERLOAD DEVICE



POS.	ITEM	FROM	TO	DESCRIPTION	PCS
1	52294129			OVERLOAD DEVICE	1
2	52299878			MICRO SWITCH	1
3	52299923	H0206388		SPRING SET	1
4	52275318			SHAFT SET	1
5	52269607			BEARING	2

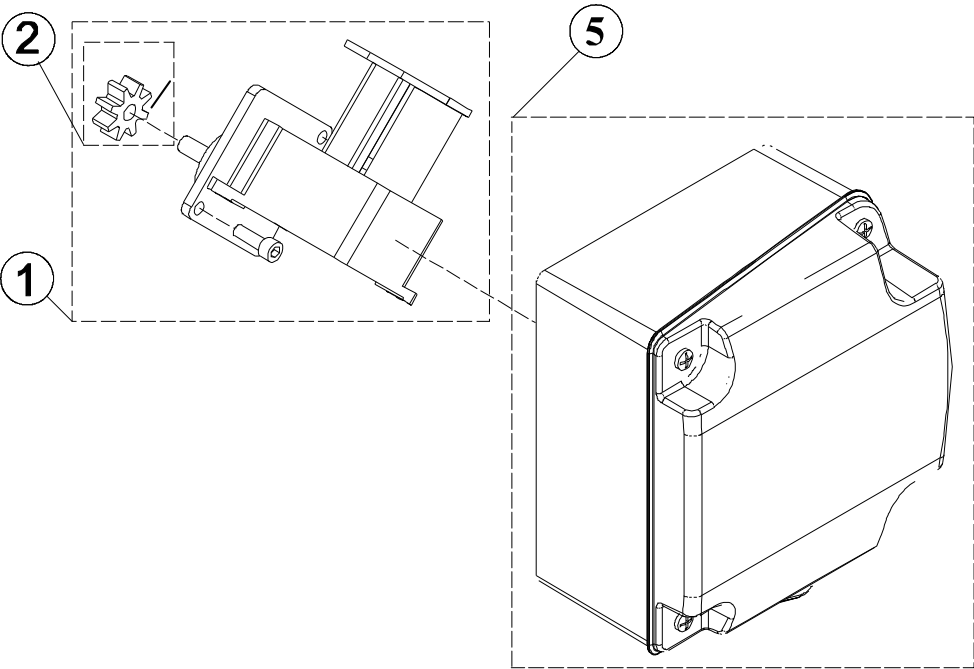
6 HOOK



005170_1

POS.	ITEM	FROM	TO	DESCRIPTION	PCS
1	52301082			HOOK ASSEMBLY	1
2	52354734			SAFETY LATCH SET	1
3	52275321			HOOK	1
4	52275331			CROSS BAR	1
5	60010408			BEARING; THRUST BEARING	1
6	52275333			LOCKING SET	1
7	52252810			COVER PLATE	1
8	52303360	H0209453		SHAFT SET	1
9	52303364	H0209453		COVER PLATE	1
10	52296584			SHEAVE; ROPE SHEAVE	1
11	52275337			SIDE PLATE	1
12	52303366	H0209453		SHEAVE; ROPE SHEAVE	1

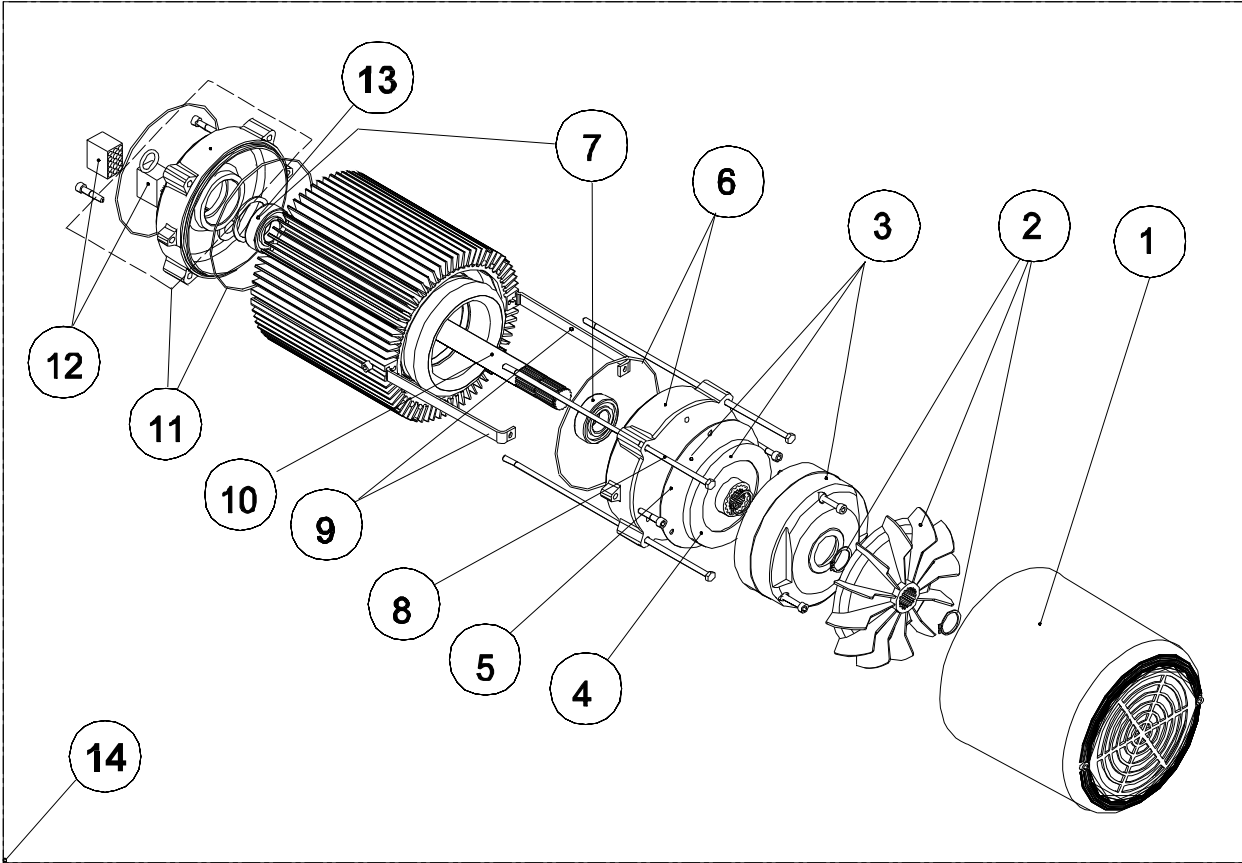
7 HOISTING LIMIT SWITCH



003103_2

POS.	ITEM	FROM	TO	DESCRIPTION	PCS
1	52283122			LIMIT SWITCH	1
2	52292471			GEAR WHEEL SET	1
5	52312349			JUNCTION BOX	1

8 MOTOR



003133_1



When ordering motors please specify motor serial number

POS.	ITEM	FROM	TO	DESCRIPTION	PCS
1	52295484			CAPSULE	1
2	52263106			FAN	1
3	52318365			BRAKE	1
4	52314608			BRAKE DISC SET	1
5	52295844			FRICTION DISC	1
6	52292742			FLANGE	1
7	52263121			BEARING SET	1
8	52263123			SCREW SET	1
9	52263115			SUPPORT	1
10	52263122			SHAFT ASSEMBLY	1
11	52292740			FLANGE	1
12	52303467			PLUG	1
13	-			NOT VALID FOR THIS PRODUCT!	
14	->			SPECIFY DEVICE SERIAL NUMBER WHEN ORDERING!	